



**2022 Edition**

***DAR-MAR  
MANUFACTURING LTD***  
*Quality Printing and Service Since 1995*

# We Offer Printing on Customer Supplied Mugs and Glassware



Do you have any blank ceramic mugs or glassware on hand that you would like custom printed?  
We can quote a price for printing only on your supplied mugs or glassware for a discounted price.

Minimum 36pcs.

Please contact for any questions or inquiries.

## COLOURED BASE GLASSWARE

**\$1.25 (c)**  
**Minimum**  
**72pcs**



### Add Colour and Style to your Glassware with a Custom Coloured Base.

**\*No extra setup charge if the base uses the same colour as the main imprint\***  
**Works on any glass style with a smooth flat base.**

## CONTACT US FOR ANY QUESTIONS OR INQUIRIES!

## Satin Etch (Frost)



colour base

## 4 Colour Process



Personalization

## Precious Metal



Gold Halo

## Print on Bottom (Glass)



## Print on Bottom (Ceramic)



## Iridescent Colours (Microwavable)



Print on Handle

## Multi Colour



## Econo Stoneware



White

### 3419 - Econo Stoneware Mug - 11oz (6C)

Imprint size: 2 3/4"h x 2 1/2"w x 6 7/8"wrap - 36/case, 30 lbs

	36	72	144	288	504	1008
White	6.90	4.30	4.10	4.00	3.90	3.80
Add. Colour	1.25	1.00	0.90	0.85	0.80	0.75
Setup Charge/Colour	\$40(G)		Repeat Setup/Colour \$20(G)			
4 Colour Process setup	\$200(G)		Halftone Setup \$50(G)			
2nd side (same)	\$0.60(C)		2nd side (different) \$0.70(C)			
			2nd side (wrap) \$0.80(C)			

## Porcelain Promo



White

### 3421 - Porcelain Promo Mug - 11oz (6C)

Imprint size: 2 3/4"h x 2 1/2"w x 6 7/8"wrap - 36/case, 30 lbs

	36	72	144	288	504	1008
White	7.15	4.50	4.30	4.20	4.10	4.00
Add. Colour	1.25	1.00	0.90	0.85	0.80	0.75
Setup Charge/Colour	\$40(G)		Repeat Setup/Colour \$20(G)			
4 Colour Process setup	\$200(G)		Halftone Setup \$50(G)			
2nd side (same)	\$0.60(C)		2nd side (different) \$0.70(C)			
			2nd side (wrap) \$0.80(C)			

## Ceramic 'C'



Black



Green



Blue



Red Out/ White In



Burgundy



Yellow

### 3419 - Ceramic 'C' Mug - 11oz (6C)

Imprint size: 2 3/4"h x 2 1/2"w x 6 7/8"wrap - 36/case, 30 lbs

	36	72	144	288	504	1008
Black, Green	8.50	5.60	5.40	5.20	5.00	4.80
Blue	8.80	5.80	5.60	5.40	5.20	5.00
Red out/White In	9.90	6.60	6.40	6.20	6.00	5.80
Burgandy, Yellow	9.30	6.25	6.05	5.85	5.65	5.45
Add. Colours	1.25	1.00	0.90	0.85	0.80	0.75
Setup Charge/Colour	\$40(G)		Repeat Setup/Colour \$20(G)			
4 Colour Process setup	\$200(G)		Halftone Setup \$50(G)			
2nd side (same)	\$0.60(C)		2nd side (different) \$0.70(C)			
			2nd side (wrap) \$0.80(C)			

## MATTE 'C'



White in



Red in

### 3419HL - Matte 'C' - 11oz (6C)

Imprint size: 2 3/4"h x 2 1/2"w x 6 7/8"wrap - 36/case, 30 lbs

	36	72	144	288	504	1008
White in	10.00	6.65	6.45	6.25	6.05	5.85
Red in	10.35	6.95	6.75	6.55	6.35	6.15
Add. Colour	1.25	1.00	0.90	0.85	0.80	0.75
Setup Charge/Colour	\$40(G)		Repeat Setup/Colour \$20(G)			
4 Colour Process setup	\$200(G)		Halftone Setup \$50(G)			
2nd side (same)	\$0.60(C)		2nd side (different) \$0.70(C)			
			2nd side (wrap) \$0.80(C)			

## El Grande



White



Black



Blue

### 3435 - El Grande - 15oz (6C)

Imprint size: 3 1/4"h x 2 3/4"w x 7 3/4"wrap - 36/case, 38 lbs

	36	72	144	288	504	1008
White	9.30	6.20	6.00	5.80	5.60	5.40
Black	10.25	6.95	6.75	6.55	6.35	6.15
Blue	10.60	7.20	7.00	6.80	6.60	6.40
Add. Colour	1.25	1.00	0.90	0.85	0.80	0.75
Setup Charge/Colour	\$40(G)		Repeat Setup/Colour \$20(G)			
4 Colour Process setup	\$200(G)		Halftone Setup \$50(G)			
2nd side (same)	\$0.60(C)		2nd side (different) \$0.70(C)			
			2nd side (wrap) \$0.80(C)			



Price subject to change without notice

Price includes a 1 Colour Imprint on 1 side



## Halo Bistro



## Bistro



### 9911 - Halo Bistro - 12oz

Imprint size: 2" h x 2 1/2" w - 36/case, 33 lbs

(6C)

	36	72	144	288	504	1008
<b>ALL</b>	10.10	6.75	6.55	6.35	6.15	5.95
<b>Add. Colour</b>	1.25	1.00	0.90	0.85	0.80	0.75
<b>Setup Charge/Colour</b>	\$40(G)		Repeat Setup/Colour \$20(G)			
<b>4 Colour Process setup</b>	\$200(G)		Halftone Setup \$50(G)			
<b>2nd side (same)</b>	\$0.60(C)		2nd side (different) \$0.70(C)			

### 1376 - Bistro - 14oz

Imprint size: 2" h x 2 1/2" w - 36/case, 33 lbs

(6C)

	36	72	144	288	504	1008
<b>White</b>	9.70	6.50	6.30	6.10	5.90	5.70
<b>Black</b>	10.80	7.40	7.20	7.00	6.80	6.60
<b>Blue</b>	10.95	7.45	7.25	7.05	6.85	6.65
<b>Red out/White In</b>	11.35	7.75	7.55	7.35	7.15	6.95
<b>Add. Colour</b>	1.25	1.00	0.90	0.85	0.80	0.75
<b>Setup Charge/Colour</b>	\$40(G)		Repeat Setup/Colour \$20(G)			
<b>4 Colour Process setup</b>	\$200(G)		Halftone Setup \$50(G)			
<b>2nd side (same)</b>	\$0.60(C)		2nd side (different) \$0.70(C)			

## Matte Black/Colour in Bistro



(6C)

### 1376M - Matte Black/Colour In Bistro - 15oz

Imprint size: 2" h x 2 1/2" w - 36/case, 33 lbs

	36	72	144	288	504	1008
<b>Blue</b>	11.65	8.00	7.80	7.60	7.40	7.20
<b>Green</b>	11.65	8.00	7.80	7.60	7.40	7.20
<b>Red</b>	11.90	8.20	8.00	7.80	7.60	7.40
<b>Orange</b>	11.90	8.20	8.00	7.80	7.60	7.40

<b>Setup Charge/Colour</b>	\$40(G)	<b>Repeat Setup/Colour</b>	\$20(G)
<b>4 Colour Process setup</b>	\$200(G)	<b>Halftone Setup</b>	\$50(G)
<b>2nd side (same)</b>	\$0.60(C)	<b>2nd side (different)</b>	\$0.70(C)



### Matte Black/Colour in (Robusto)



(6C)

#### 1881 - Matte Black/Colour in Robusto - 14oz

Imprint size: 2" h x 2" w - 36/case, 39 lbs

	36	72	144	288	504	1008
<b>Blue</b>	12.30	8.50	8.30	8.10	7.90	7.70
<b>Green</b>	12.30	8.50	8.30	8.10	7.90	7.70
<b>Red</b>	12.60	8.75	8.55	8.35	8.15	7.95
<b>Orange</b>	12.60	8.75	8.55	8.35	8.15	7.95
<b>Yellow</b>	12.30	8.50	8.30	8.10	7.90	7.70
<b>Add. Colour</b>	1.25	1.00	0.90	0.85	0.80	0.75
<b>Setup Charge/Colour</b>	\$40(G)		Repeat Setup/Colour \$20(G)			
<b>4 Colour Process setup</b>	\$200(G)		Halftone Setup \$50(G)			
<b>2nd side (same)</b>	\$0.60(C)		2nd side (different) \$0.70(C)			

### Matte White/Colour in (Robustia)



(6C)

#### 2402 - Matte White/Colour in Robustia - 14oz

Imprint size: 2" h x 2" w - 36/case, 39 lbs

	36	72	144	288	504	1008
<b>White</b>	12.30	8.60	8.40	8.20	8.00	7.80
<b>Black</b>	12.30	8.60	8.40	8.20	8.00	7.80
<b>Blue</b>	12.30	8.60	8.40	8.20	8.00	7.80
<b>Green</b>	12.30	8.60	8.40	8.20	8.00	7.80
<b>Red</b>	12.60	8.80	8.60	8.40	8.20	8.00
<b>Add. Colour</b>	1.25	1.00	0.90	0.85	0.80	0.75
<b>Setup Charge/Colour</b>	\$40(G)		Repeat Setup/Colour \$20(G)			
<b>4 Colour Process setup</b>	\$200(G)		Halftone Setup \$50(G)			
<b>2nd side (same)</b>	\$0.60(C)		2nd side (different) \$0.70(C)			

### Short Funnel



(6C)

#### 1335 - Short Funnel - 12oz

Imprint size: 2" h x 2" w - 36/case, 31 lbs

	36	72	144	288	504	1008
<b>White</b>	8.35	5.45	5.25	5.05	4.85	4.65
<b>Black</b>	9.40	6.25	6.05	5.85	5.65	5.45
<b>Blue</b>	9.70	6.50	6.30	6.10	5.90	5.70
<b>Add. Colour</b>	1.25	1.00	0.90	0.85	0.80	0.75
<b>Setup Charge/Colour</b>	\$40(G)		Repeat Setup/Colour \$20(G)			
<b>4 Colour Process setup</b>	\$200(G)		Halftone Setup \$50(G)			
<b>2nd side (same)</b>	\$0.60(C)		2nd side (different) \$0.70(C)			

### Jasmine



(6C)

#### 9624 - Jasmine - 11oz

Imprint size: 2" h x 2" w - 36/case, 29 lbs

	36	72	144	288	504	1008
<b>All Colours</b>	8.25	5.25	5.05	4.85	4.65	4.45
<b>Add. Colour</b>	1.25	1.00	0.90	0.85	0.80	0.75
<b>Setup Charge/Colour</b>	\$40(G)		Repeat Setup/Colour \$20(G)			
<b>4 Colour Process setup</b>	\$200(G)		Halftone Setup \$50(G)			
<b>2nd side (same)</b>	\$0.60(C)		2nd side (different) \$0.70(C)			



## Matte White/Colour in (Venetia)



**1527S - Matte White/Colour in Venetia - 12oz**  
 Imprint size: 2" h x 2" w - 36/case, 32 lbs

	36	72	144	288	504	1008
<b>Black</b>	11.10	7.50	7.30	7.10	6.90	6.70
<b>Blue</b>	11.10	7.50	7.30	7.10	6.90	6.70
<b>Green</b>	11.10	7.50	7.30	7.10	6.90	6.70
<b>Red</b>	11.70	8.00	7.80	7.60	7.40	7.20
<b>Add. Colour</b>	1.25	1.00	0.90	0.85	0.80	0.75
<b>Setup Charge/Colour</b>	\$40(G)		Repeat Setup/Colour \$20(G)			
<b>4 Colour Process setup</b>	\$200(G)		Halftone Setup \$50(G)			
<b>2nd side (same)</b>	\$0.60(C)		2nd side (different) \$0.70(C)			

## Matte Black/Colour in (Veneto)



**1526S - Matte Black/Colour in Veneto - 12oz**  
 Imprint size: 2" h x 2" w - 36/case, 32 lbs

	36	72	144	288	504	1008
<b>Yellow</b>	11.10	7.50	7.30	7.10	6.90	6.70
<b>Blue</b>	11.10	7.50	7.30	7.10	6.90	6.70
<b>Green</b>	11.10	7.50	7.30	7.10	6.90	6.70
<b>Red</b>	11.70	8.00	7.80	7.60	7.40	7.20
<b>Add. Colour</b>	1.25	1.00	0.90	0.85	0.80	0.75
<b>Setup Charge/Colour</b>	\$40(G)		Repeat Setup/Colour \$20(G)			
<b>4 Colour Process setup</b>	\$200(G)		Halftone Setup \$50(G)			
<b>2nd side (same)</b>	\$0.60(C)		2nd side (different) \$0.70(C)			

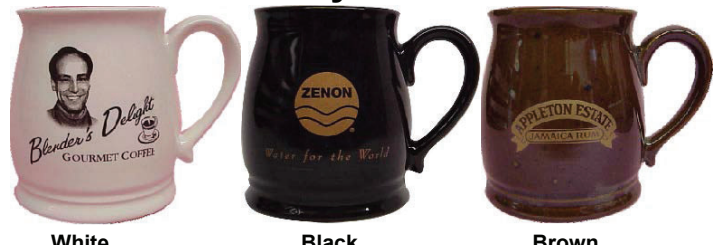
## Kona



**8919 - Kona - 15oz**  
 Imprint size: 2" h x 3" w - 36/case, 43lbs

	36	72	144	288	504	1008
<b>White</b>	10.90	7.50	7.30	7.10	6.90	6.70
<b>Black</b>	11.80	8.15	7.95	7.75	7.55	7.35
<b>Blue</b>	12.10	8.40	8.20	8.00	7.80	7.60
<b>Add. Colour</b>	1.25	1.00	0.90	0.85	0.80	0.75
<b>Setup Charge/Colour</b>	\$40(G)		Repeat Setup/Colour \$20(G)			
<b>4 Colour Process setup</b>	\$200(G)		Halftone Setup \$50(G)			
<b>2nd side (same)</b>	\$0.60(C)		2nd side (different) \$0.70(C)			

## Pot Belly - 13oz



**TS0148 - Pot Belly - 13oz**  
 Imprint size: 2" h x 2" w - 36/case, 36 lbs

	36	72	144	288	504	1008
<b>White</b>	9.75	6.35	6.15	5.95	5.75	5.55
<b>Black</b>	10.00	6.55	6.35	6.15	5.95	5.75
<b>Brown w/ Speckle</b>	10.25	6.75	6.55	6.35	6.15	5.95
<b>Add. Colour</b>	1.25	1.00	0.90	0.85	0.80	0.75
<b>Setup Charge/Colour</b>	\$40(G)		Repeat Setup/Colour \$20(G)			
<b>4 Colour Process setup</b>	\$200(G)		Halftone Setup \$50(G)			
<b>2nd side (same)</b>	\$0.60(C)		2nd side (different) \$0.70(C)			



**Comfort**



White

Black

Blue

**1302 - Comfort - 12oz**

(6C)

Imprint size: 2" h x 2 1/4" w - 36/case, 33 lbs

	36	72	144	288	504	1008
<b>White</b>	9.20	6.10	5.90	5.70	5.50	5.30
<b>Black</b>	9.75	6.55	6.35	6.15	5.95	5.75
<b>Blue</b>	10.00	6.70	6.50	6.30	6.10	5.90
<b>Add. Colour</b>	1.25	1.00	0.90	0.85	0.80	0.75
<b>Setup Charge/Colour</b>	\$40(G)			Repeat Setup/Colour \$20(G)		
<b>4 Colour Process setup</b>	\$200(G)			Halftone Setup \$50(G)		
<b>2nd side (same)</b>	\$0.60(C)			2nd side (different) \$0.70(C)		

**Rustic**



Black

Blue

**A52 - Rustic - 14oz**

(6C)

Imprint size: 2" h x 3" w - 36/case, 35 lbs

	36	72	144	288	504	1008
<b>Black</b>	8.95	5.75	5.55	5.35	5.15	4.95
<b>Blue</b>	9.20	5.95	5.75	5.55	5.35	5.15
<b>Add. Colour</b>	1.25	1.00	0.90	0.85	0.80	0.75
<b>Setup Charge/Colour</b>	\$40(G)			Repeat Setup/Colour \$20(G)		
<b>4 Colour Process setup</b>	\$200(G)			Halftone Setup \$50(G)		
<b>2nd side (same)</b>	\$0.60(C)			2nd side (different) \$0.70(C)		

**Coffee House**



**611 - Coffee House - 9oz**

(6C)

Imprint size: 2" h x 2" w - 36/case, 30 lbs

	36	72	144	288	504	1008
<b>1colour</b>	7.05	4.35	4.15	3.95	3.75	3.55
<b>Add. Colour</b>	1.25	1.00	0.90	0.85	0.80	0.75
<b>Setup Charge/Colour</b>	\$40(G)			Repeat Setup/Colour \$20(G)		
<b>4 Colour Process setup</b>	\$200(G)			Halftone Setup \$50(G)		
<b>2nd side (same)</b>	\$0.60(C)			2nd side (different) \$0.70(C)		

**Espresso Cup/Saucer Set**



**TC3 - Espresso Sets 4oz**

(6C)

Imprint size: 1 1/2" h x 1 3/4" w

	36	72	144	288	504	1008
<b>1 Colour</b>	12.80	8.75	8.55	8.35	8.15	7.95
<b>Add. Colour</b>	1.25	1.00	0.90	0.85	0.80	0.75
<b>Setup Charge/Colour</b>	\$40(G)			Repeat Setup/Colour \$20(G)		
<b>4 Colour Process setup</b>	\$200(G)			Halftone Setup \$50(G)		
<b>2nd side (same)</b>	\$0.60(C)			2nd side (different) \$0.70(C)		

**Mini Mug**



**D25 - Mini Mug - 2oz**

(6C)

Imprint size: 1 5/8" h x 1 3/4" w - 144/case, 27lbs

	48	72	144	288	504	1008
<b>White</b>	5.85	4.80	4.65	4.50	4.35	4.20
<b>Add. Colour</b>	1.15	1.00	0.90	0.85	0.80	0.75
<b>Setup Charge/Colour</b>	\$40(G)			Repeat Setup/Colour \$20(G)		
<b>4 Colour Process setup</b>	\$200(G)			Halftone Setup \$50(G)		
<b>2nd side (same)</b>	\$0.60(C)			2nd side (different) \$0.70(C)		





## CC - Ceramic Coaster/Lids

Imprint size: 2 1/2" h x 2 1/2" w - 144/case, 26lbs

(6C)

	36	72	144	288	504	1008
White	5.55	3.15	2.95	2.75	2.55	2.35
Add. Colour	1.25	1.00	0.90	0.85	0.80	0.75
Setup Charge/Colour	\$40(G)		Repeat Setup/Colour \$20(G)			
4 Colour Process setup	\$200(G)		Halftone Setup \$50(G)			

## Ceramic Coaster/Lids



## Coupe Plates

Souvenir plates 8" or 9" coup w/ gold rim

(6C)

	36	72	144	288	504	1008
8" with 6" Print	16.35	11.35	11.15	10.95	10.75	10.55
9" with 7" Print	17.65	12.35	12.15	11.95	11.75	11.55
Back Stamp	2.00	1.75	1.65	1.60	1.55	1.50
Add. Colour	1.25	1.00	0.90	0.85	0.80	0.75
Setup Charge/Colour	\$40(G)		Repeat Setup/Colour \$20(G)			
4 Colour Process setup	\$200(G)		Halftone Setup \$50(G)			

## Coupe Plates



## 563970

### 12" Dinner Plates (Print side on Rim only) (6C)

Imprint size: 1" h x 4" w - 12/case - 35lbs

	36	72	144	288	504	1008
12" Dinner Plate	26.00	19.40	19.20	19.00	18.80	18.60
Add. Colour	1.25	1.00	0.90	0.85	0.80	0.75
Setup Charge/Colour	\$40(G)		Repeat Setup/Colour \$20(G)			
4 Colour Process setup	\$200(G)		Halftone Setup \$50(G)			
			2nd location \$1.25(C)			

## 12" Dinner Plate



563970

## 563952 - Cereal bowl

Imprint size: 3/4" h x 2" w - 36/case,

(6C)

	36	72	144	288	504	1008
Cereal bowl	13.00	8.25	8.05	7.85	7.65	7.45
Add. Colour	1.25	1.00	0.90	0.85	0.80	0.75
Setup Charge/Colour	\$40(G)		Repeat Setup/Colour \$20(G)			
4 Colour Process setup	\$200(G)		Halftone Setup \$50(G)			

## Cereal bowl



(563952)

5.6" Diameter

Price subject to change without notice

Price includes a 1 Colour Imprint on 1 side



**Econo Shot Glass**  
2oz

**1032 - Econo Shot Glass - 2oz** (5C)

Imprint size: 1 1/4"h x 1 1/2"w - 144/case, 25 lbs

	72	144	288	504	1008
<b>1 Colour</b>	4.05	3.90	3.75	3.60	3.45
<b>Add. Colour</b>	1.00	0.90	0.85	0.80	0.75
<b>Setup Charge/Colour</b> \$40(G)			<b>Repeat Setup/Colour</b> \$20(G)		
<b>4 Colour Process setup</b> \$200(G)			<b>Halftone Setup</b> \$50(G)		
<b>2nd side (same)</b> \$0.60(C)			<b>2nd side (different)</b> \$0.70(C)		



**Shot Glass**  
1.75oz

**5114 - Shot Glass - 1.75oz** (5C)

Imprint size: 1 1/4"h x 1 1/2"w - 72/case, 14lbs

	72	144	288	504	1008
<b>1 Colour</b>	5.50	5.35	5.20	5.05	4.90
<b>Add. Colour</b>	1.00	0.90	0.85	0.80	0.75
<b>Setup Charge/Colour</b> \$40(G)			<b>Repeat Setup/Colour</b> \$20(G)		
<b>4 Colour Process setup</b> \$200(G)			<b>Halftone Setup</b> \$50(G)		
<b>2nd side (same)</b> \$0.60(C)			<b>2nd side (different)</b> \$0.70(C)		



**Shooter**  
2.5oz

**1650 - Shooter - 2.5oz** (5C)

Imprint size: 2 1/2"h x 1 1/2"w - 48/case, 13lbs

	96	144	288	504	1008
<b>1 Colour</b>	6.30	6.15	6.00	5.85	5.70
<b>Add. Colour</b>	1.00	0.90	0.85	0.80	0.75
<b>Setup Charge/Colour</b> \$40(G)			<b>Repeat Setup/Colour</b> \$20(G)		
<b>4 Colour Process setup</b> \$200(G)			<b>Halftone Setup</b> \$50(G)		
<b>2nd side (same)</b> \$0.60(C)			<b>2nd side (different)</b> \$0.70(C)		



**Square Shot**  
2oz

**5277 - Square Shot Glass - 2oz** (5C)

Imprint size: 1 1/4"h x 1 1/4"w - 72/case, 25lbs

	72	144	288	504	1008
<b>1 Colour</b>	6.05	5.90	5.85	5.70	5.55
<b>Add. Colour</b>	1.00	0.90	0.85	0.80	0.75
<b>Setup Charge/Colour</b> \$40(G)			<b>Repeat Setup/Colour</b> \$20(G)		
<b>4 Colour Process setup</b> \$200(G)			<b>Halftone Setup</b> \$50(G)		
<b>2nd side (same)</b> \$0.60(C)			<b>2nd side (different)</b> \$0.70(C)		



**5126 Fluted Whiskey**  
2oz

**5126 - Fluted Whiskey - 2oz** (5C)

Imprint size: 1 1/4"h x 1 1/2"w - 48/case, 22 lbs

	96	144	288	504	1008
<b>1 Colour</b>	5.90	5.75	5.60	5.45	5.30
<b>Add. Colour</b>	1.00	0.90	0.85	0.80	0.75
<b>Setup Charge/Colour</b> \$40(G)			<b>Repeat Setup/Colour</b> \$20(G)		
<b>4 Colour Process setup</b> \$200(G)			<b>Halftone Setup</b> \$50(G)		
<b>2nd side (same)</b> \$0.60(C)			<b>2nd side (different)</b> \$0.70(C)		





**Super Mug**  
1L / 34oz

**5262 - Super Mug - 1L / 34oz** (5C)

Imprint size: 3" h x 4" w - 12/case, 39 lbs

	72	144	288	504	1008
<b>1 Colour</b>	15.85	15.65	15.45	15.25	15.05
<b>Add. Colour</b>	1.00	0.90	0.85	0.80	0.75
<b>Setup Charge/Colour \$40(G)</b>			<b>Repeat Setup/Colour \$20(G)</b>		
<b>4 Colour Process setup \$200(G)</b>			<b>Halftone Setup \$50(G)</b>		
<b>2nd side (same) \$0.60(C)</b>			<b>2nd side (different) \$0.70(C)</b>		



**Oktoberfest**  
0.5L (12029521)  
1L (12030021)

**Oktoberfest** (5C)

12029521 0.5L Imprint size: 2" h x 2" w - 12/case, 20 lbs

12030021 1L Imprint size: 2" h x 2" w - 6/case, 18 lbs

	72	144	288	504	1008
<b>0.5L</b>	12.45	12.25	12.05	11.85	11.65
<b>1L</b>	15.65	15.45	15.25	15.05	14.85
<b>Add. Colour</b>	1.00	0.90	0.85	0.80	0.75
<b>Setup Charge/Colour \$40(G)</b>			<b>Repeat Setup/Colour \$20(G)</b>		
<b>4 Colour Process setup \$200(G)</b>			<b>Halftone Setup \$50(G)</b>		
<b>2nd side (same) \$0.60(C)</b>			<b>2nd side (different) \$0.70(C)</b>		



**Econo Beer Stein**  
13oz

**1272 Econo Beer Stein - 13oz** (6C)

Imprint size: 3" h x 2 1/2" w - 24/case, 33 lbs

	36	72	144	288	504	1008
<b>1 Colour</b>	10.50	7.05	6.90	6.75	6.60	6.45
<b>Add. Colour</b>	1.25	1.00	0.90	0.85	0.80	0.75
<b>Setup Charge/Colour \$40(G)</b>			<b>Repeat Setup/Colour \$20(G)</b>			
<b>4 Colour Process setup \$200(G)</b>			<b>Halftone Setup \$50(G)</b>			
<b>2nd side (same) \$0.60(C)</b>			<b>2nd side (different) \$0.70(C)</b>			



**Econo Beer Stein**  
16oz

**720 Econo Beer Stein - 16oz** (6C)

Imprint size: 3 1/2" h x 2 1/2" w - 24/case, 44 lbs

	48	72	144	288	504	1008
<b>1 Colour</b>	8.75	7.75	7.60	7.45	7.30	7.15
<b>Add. Colour</b>	1.15	1.00	0.90	0.85	0.80	0.75
<b>Setup Charge/Colour \$40(G)</b>			<b>Repeat Setup/Colour \$20(G)</b>			
<b>4 Colour Process setup \$200(G)</b>			<b>Halftone Setup \$50(G)</b>			
<b>2nd side (same) \$0.60(C)</b>			<b>2nd side (different) \$0.70(C)</b>			



**Sports Tankard  
16oz**

**5092 - Sports Tankard**

16oz Imprint size: 3"h x 2 1/2"w - 12/case, 21lbs

(5C)

	<b>72</b>	<b>144</b>	<b>288</b>	<b>504</b>	<b>1008</b>
<b>1 colour</b>	8.95	8.75	8.55	8.35	8.15
<b>Add. Colour</b>	1.00	0.90	0.85	0.80	0.75
<b>Setup Charge/Colour</b>	<b>\$40(G)</b>		<b>Repeat Setup/Colour \$20(G)</b>		
<b>4 Colour Process setup</b>	<b>\$200(G)</b>		<b>Halftone Setup \$50(G)</b>		
<b>2nd side (same)</b>	<b>\$0.60(C)</b>		<b>2nd side (different) \$0.70(C)</b>		



**Frankfurt  
21oz**

**5001 - Frankfurt - 21oz**

Imprint size: 2 1/2"h x 2 1/2"w - 12/case, 30lbs

(5C)

	<b>72</b>	<b>144</b>	<b>288</b>	<b>504</b>	<b>1008</b>
<b>1 Colour</b>	12.20	12.00	11.80	11.60	11.40
<b>Add. Colour</b>	1.00	0.90	0.85	0.80	0.75
<b>Setup Charge/Colour</b>	<b>\$40(G)</b>		<b>Repeat Setup/Colour \$20(G)</b>		
<b>4 Colour Process setup</b>	<b>\$200(G)</b>		<b>Halftone Setup \$50(G)</b>		
<b>2nd side (same)</b>	<b>\$0.60(C)</b>		<b>2nd side (different) \$0.70(C)</b>		



**Sports Tankard with Panels  
12oz**

**52733 - Sports Tankard w/panels - 12oz (5C)**

Imprint size: 3"h x 2 1/2"w - 12/case, 18lbs

	<b>72</b>	<b>144</b>	<b>288</b>	<b>504</b>	<b>1008</b>
<b>1 Colour</b>	9.55	9.35	9.15	8.95	8.75
<b>Add. Colour</b>	1.00	0.90	0.85	0.80	0.75
<b>Setup Charge/Colour</b>	<b>\$40(G)</b>		<b>Repeat Setup/Colour \$20(G)</b>		
<b>4 Colour Process setup</b>	<b>\$200(G)</b>		<b>Halftone Setup \$50(G)</b>		
<b>2nd side (same)</b>	<b>\$0.60(C)</b>		<b>2nd side (different) \$0.70(C)</b>		



**Maritime  
15oz**

**5027 - Maritime - 15oz**

Imprint size: 2 1/2"h x 2 1/2"w - 12/case, 20 lbs

(5C)

	<b>72</b>	<b>144</b>	<b>288</b>	<b>504</b>	<b>1008</b>
<b>1 Colour</b>	9.60	9.40	9.20	9.00	8.80
<b>Add. Colour</b>	1.00	0.90	0.85	0.80	0.75
<b>Setup Charge/Colour</b>	<b>\$40(G)</b>		<b>Repeat Setup/Colour \$20(G)</b>		
<b>4 Colour Process setup</b>	<b>\$200(G)</b>		<b>Halftone Setup \$50(G)</b>		
<b>2nd side (same)</b>	<b>\$0.60(C)</b>		<b>2nd side (different) \$0.70(C)</b>		







**Pub Pilsner**  
16oz (1631)  
23oz (1611)

**Pub Pilsner**

1631 16oz Imprint size: 1 3/4" h x 2" w - 12/case, 10lbs

1611 23oz Imprint size: 2" h x 2 1/4" w - 12/case, 15lbs

(5C)

	72	144	288	504	1008
<b>16oz</b>	8.25	8.05	7.85	7.65	7.45
<b>23oz</b>	8.60	8.40	8.20	8.00	7.80
<b>Add Colour</b>	1.00	0.90	0.85	0.80	0.75

Setup Charge/Colour **\$40(G)**      Repeat Setup/Colour **\$20(G)**  
 4 Colour Process setup **\$200(G)**      Halftone Setup **\$50(G)**  
 2nd side (same) **\$0.60(C)**      2nd side (different) **\$0.70(C)**



**Altitude Pilsner**  
16oz (1690)  
20oz (1691)

**Altitude Pilsner**

1690 - 16oz Imprint size: 1 3/4" h x 1 3/4" w - 24/case, 22lbs

1691 - 20oz Imprint size: 2" h x 2" w - 12/case, 14lbs

(5C)

	72	144	288	504	1008
<b>16oz</b>	8.20	8.00	7.80	7.60	7.40
<b>20oz</b>	8.70	8.50	8.30	8.10	7.90
<b>Add. Colour</b>	1.00	0.90	0.85	0.80	0.75

Setup Charge/Colour **\$40(G)**      Repeat Setup/Colour **\$20(G)**  
 4 Colour Process setup **\$200(G)**      Halftone Setup **\$50(G)**  
 2nd side (same) **\$0.60(C)**      2nd side (different) **\$0.70(C)**



**Grand Pilsner**  
12oz (1612)  
16oz (1604)  
23oz (1610)

**Grand Pilsner**

1612 - 12oz Imprint size: 1 1/2" h x 2" w - 24/case, 18lbs

1604 - 16oz Imprint size: 2" h x 2" w - 24/case, 22lbs

1610 - 23oz Imprint size: 2 1/4" h x 2 1/4" w - 12/case, 14lbs

(5C)

	72	144	288	504	1008
<b>12oz</b>	7.85	7.65	7.45	7.25	7.05
<b>16oz</b>	8.45	8.25	8.05	7.85	7.65
<b>23oz</b>	9.45	9.25	9.05	8.85	8.65
<b>Add Colour</b>	1.00	0.90	0.85	0.80	0.75

Setup Charge/Colour **\$40(G)**      Repeat Setup/Colour **\$20(G)**  
 4 Colour Process setup **\$200(G)**      Halftone Setup **\$50(G)**  
 2nd side (same) **\$0.60(C)**      2nd side (different) **\$0.70(C)**



**3823 Tall Beer**  
14.5oz

**3823 - Tall Beer - 14.5oz**

Imprint size: 2" h x 1.5" w - 24/case, 25 lbs

(5C)

	72	144	288	504	1008
<b>1 Colour</b>	15.30	15.10	14.90	14.70	14.50
<b>Add. Colour</b>	1.00	0.90	0.85	0.80	0.75

Setup Charge/Colour **\$40(G)**      Repeat Setup/Colour **\$20(G)**  
 4 Colour Process setup **\$200(G)**      Halftone Setup **\$50(G)**  
 2nd side (same) **\$0.60(C)**      2nd side (different) **\$0.70(C)**





**Wallibecher**  
**16oz (14816HT)**  
**20oz (196)**

**Wallibecher**

(5C)

14816HT - 16oz Imprint size: 1 3/4" h x 1 3/4" w - 12/case, 8lbs  
 196 - 20oz Imprint size: 2" h x 2" w - 24/case, 20lbs

	72	144	288	504	1008
<b>16oz</b>	7.55	7.35	7.15	6.95	6.75
<b>20oz</b>	8.75	8.55	8.35	8.15	7.95
<b>Add. Colour</b>	1.00	0.90	0.85	0.80	0.75
<b>Setup Charge/Colour</b>	\$40(G)		<b>Repeat Setup/Colour \$20(G)</b>		
<b>4 Colour Process setup</b>	\$200(G)		<b>Halftone Setup \$50(G)</b>		
<b>2nd side (same)</b>	\$0.60(C)		<b>2nd side (different) \$0.70(C)</b>		



**Tulip**  
**16oz(4808)**  
**20oz(4803)**

**Tulip**

(5C)

4808 - 16oz Imprint size: 1 1/2" h x 2 1/2" w - 24/case, 14lbs  
 4803 - 20oz Imprint size: 1 3/4" h x 2 3/4" w - 24/case, 16lbs

	72	144	288	504	1008
<b>16oz</b>	7.85	7.65	7.45	7.25	7.05
<b>20oz</b>	7.95	7.75	7.55	7.35	7.15
<b>Add. Colour</b>	1.00	0.90	0.85	0.80	0.75
<b>Setup Charge/Colour</b>	\$40(G)		<b>Repeat Setup/Colour \$20(G)</b>		
<b>4 Colour Process setup</b>	\$200(G)		<b>Halftone Setup \$50(G)</b>		
<b>2nd side (same)</b>	\$0.60(C)		<b>2nd side (different) \$0.70(C)</b>		



**Mixing Glass**  
**16oz (5139)**

**5139 - Mixing Glass - 16oz**

(5C)

Imprint size: 3" h x 2" w - 24/case, 24lbs

	72	144	288	504	1008
<b>1 Colour</b>	6.15	5.95	5.75	5.55	5.35
<b>Add. Colour</b>	1.00	0.90	0.85	0.80	0.75
<b>Setup Charge/Colour</b>	\$40(G)		<b>Repeat Setup/Colour \$20(G)</b>		
<b>4 Colour Process setup</b>	\$200(G)		<b>Halftone Setup \$50(G)</b>		
<b>2nd side (same)</b>	\$0.60(C)		<b>2nd side (different) \$0.70(C)</b>		



**English Pub**  
**16oz (14806HT)**  
**20oz (14801HT)**

**English Pub**

(5C)

14806HT 16oz - Imprint size: 2" h x 1 3/4" w - 36/case, 24lb  
 14801HT 20oz - Imprint size: 2 1/4" h x 2" w - 36/case, 28lbs

	72	144	288	504	1008
<b>16oz</b>	7.90	7.70	7.50	7.30	7.10
<b>20oz</b>	8.15	7.95	7.75	7.55	7.35
<b>Add. Colour</b>	1.00	0.90	0.85	0.80	0.75
<b>Setup Charge/Colour</b>	\$40(G)		<b>Repeat Setup/Colour \$20(G)</b>		
<b>4 Colour Process setup</b>	\$200(G)		<b>Halftone Setup \$50(G)</b>		
<b>2nd side (same)</b>	\$0.60(C)		<b>2nd side (different) \$0.70(C)</b>		



## 1512 Embassy Rock - 10.5oz

### 12264 Embassy Cooler - 16oz

1512 - 10.5 oz - Imprint size: 1 1/2" h x 2" w - 36/case, 15lbs

12264 - 16oz - Imprint size: 2" h x 2" w - 36/case, 28lbs

(5C)

	72	144	288	504	1008
1512 - 10.5oz	6.95	6.75	6.55	6.35	6.15
12264 - 16oz	7.15	6.95	6.75	6.55	6.35
Add. Colour	1.00	0.90	0.85	0.80	0.75
Setup Charge/Colour	\$40(G)		Repeat Setup/Colour \$20(G)		
4 Colour Process setup	\$200(G)		Halftone Setup \$50(G)		
2nd side (same)	\$0.60(C)		2nd side (different) \$0.70(C)		



**Embassy Rock  
10.5oz (1512)**



**Embassy Cooler  
16oz (12264)**

## 2205 Sterling DOF - 12oz

### 2206 Sterling Cooler - 16oz

2205 - 12oz - Imprint size: 2 1/2" h x 2" w - 12/case, 10lbs

2206 - 16oz - Imprint size: 3 1/4" h x 1 3/4" w - 12/case, 10lbs

(5C)

	72	144	288	504	1008
2205 - 12oz	7.30	7.10	6.90	6.70	6.50
2206 - 16oz	7.40	7.20	7.00	6.80	6.60
Add. Colour	1.00	0.90	0.85	0.80	0.75
Setup Charge/Colour	\$40(G)		Repeat Setup/Colour \$20(G)		
4 Colour Process setup	\$200(G)		Halftone Setup \$50(G)		
2nd side (same)	\$0.60(C)		2nd side (different) \$0.70(C)		



**Sterling DOF  
12oz (2205)**



**Sterling Cooler  
16oz (2206)**

## Executive Rock

2338 - 10.25oz - Imprint size: 2" h x 2 3/4" w - 36/case, 22lbs

2339 - 12.5oz - Imprint size: 2" h x 2 3/4" w - 36/case, 32lbs

(5C)

	72	144	288	504	1008
2338 - 10.25oz	7.30	7.10	6.90	6.70	6.50
2339 - 12.5oz	8.80	8.60	8.40	8.20	8.00



**Executive Rock  
10.25oz (2338)  
12.5oz (2339)**



**Executive Highball  
11.25oz (2359)  
15.5oz (2369)**

## Executive Highball

2359 - 11.25oz - Imprint size: 3 1/4" h x 2 1/4" w - 36/case, 23lbs

2369 - 15.5oz - Imprint size: 3 3/4" h x 2 1/4" w - 36/case, 28lbs

(5C)

	72	144	288	504	1008
2359 - 11.25oz	6.60	6.40	6.20	6.00	5.80
2369 - 15.5oz	6.70	6.50	6.30	6.10	5.90
Add. Colour	1.00	0.90	0.85	0.80	0.75
Setup Charge/Colour	\$40(G)		Repeat Setup/Colour \$20(G)		
4 Colour Process setup	\$200(G)		Halftone Setup \$50(G)		
2nd side (same)	\$0.60(C)		2nd side (different) \$0.70(C)		





**Stemless Flute**  
8.5oz (228)

### Stemless Flute

228 - 8.5oz - Imprint size: 2" h x 1 1/4" w - 12/case, 4lbs

(5C)

	<b>72</b>	<b>144</b>	<b>288</b>	<b>504</b>	<b>1008</b>
<b>1 colour</b>	7.30	7.15	7.00	6.85	6.70
<b>Add. Colour</b>	1.00	0.90	0.85	0.80	0.75
<b>Setup Charge/Colour</b>	<b>\$40(G)</b>			<b>Repeat Setup/Colour \$20(G)</b>	
<b>4 Colour Process setup</b>	<b>\$200(G)</b>			<b>Halftone Setup \$50(G)</b>	
<b>2nd side (same)</b>	<b>\$0.60(C)</b>			<b>2nd side (different)</b>	<b>\$0.70(C)</b>



**Stemless Martini**  
13.5oz (224)

### Stemless Martini

224 - 13.5oz - Imprint size: 1 1/4" h x 1 1/4" w - 12/case, 10lbs

(5C)

	<b>72</b>	<b>144</b>	<b>288</b>	<b>504</b>	<b>1008</b>
<b>1 colour</b>	7.65	7.50	7.35	7.20	7.05
<b>Add. Colour</b>	1.00	0.90	0.85	0.80	0.75
<b>Setup Charge/Colour</b>	<b>\$40(G)</b>			<b>Repeat Setup/Colour \$20(G)</b>	
<b>4 Colour Process setup</b>	<b>\$200(G)</b>			<b>Halftone Setup \$50(G)</b>	
<b>2nd side (same)</b>	<b>\$0.60(C)</b>			<b>2nd side (different)</b>	<b>\$0.70(C)</b>



**Stemless Wine**  
5oz (260)  
9oz (207)  
15oz (213)  
17oz (221)

### Stemless Wine Glass

260 - 6.25oz - Imprint size: 1 1/4" h x 1 1/4" w - 12/case, 3 lbs  
207 - 9oz - Imprint size: 1 1/4" h x 1 1/4" w - 12/case, 3 lbs  
213 - 15oz - Imprint size: 1 1/2" h x 1 1/2" w - 12/case, 5 lbs  
221 - 17oz - Imprint size: 1 3/4" h x 1 3/4" w - 12/case, 6 lbs

(5C)

	<b>72</b>	<b>144</b>	<b>288</b>	<b>504</b>	<b>1008</b>
<b>6.25oz</b>	6.95	6.80	6.65	6.50	6.35
<b>9oz</b>	7.00	6.85	6.70	6.55	6.40
<b>15oz</b>	7.25	7.10	6.95	6.80	6.65
<b>17oz</b>	7.60	7.45	7.30	7.15	7.00
<b>Add Colour</b>	1.00	0.90	0.85	0.80	0.75
<b>Setup Charge/Colour</b>	<b>\$40(G)</b>			<b>Repeat Setup/Colour \$20(G)</b>	
<b>4 Colour Process setup</b>	<b>\$200(G)</b>			<b>Halftone Setup \$50(G)</b>	
<b>2nd side (same)</b>	<b>\$0.60(C)</b>			<b>2nd side (different)</b>	<b>\$0.70(C)</b>



**Stemless Red Wine**  
16.75oz (222)

### Stemless Red Wine

222 - 16.75oz - Imprint size: 1 3/4" h x 1 3/4" w - 12/case, 5 lbs

(5C)

	<b>72</b>	<b>144</b>	<b>288</b>	<b>504</b>	<b>1008</b>
<b>1 Colour</b>	7.70	7.55	7.40	7.25	7.10
<b>Add. Colour</b>	1.00	0.90	0.85	0.80	0.75
<b>Setup Charge/Colour</b>	<b>\$40(G)</b>			<b>Repeat Setup/Colour \$20(G)</b>	
<b>4 Colour Process setup</b>	<b>\$200(G)</b>			<b>Halftone Setup \$50(G)</b>	
<b>2nd side (same)</b>	<b>\$0.60(C)</b>			<b>2nd side (different)</b>	<b>\$0.70(C)</b>







**Martini Glass**  
**8.5oz (8485)**  
**10oz (8480)**

**Martini Glass (5C)**

8485 - 7.5oz - Imprint size: 1 1/4"h x 1 1/4"w - 12/case, 10 lbs  
 8480 - 10oz - Imprint size: 1 1/2"h x 1 1/2"w - 12/case, 10lbs

	72	144	288	504	1008
<b>7.5oz</b>	12.05	11.85	11.65	11.45	11.25
<b>10oz</b>	12.35	12.15	11.95	11.75	11.55
<b>Add. Colour</b>	1.00	0.90	0.85	0.80	0.75
<b>Setup Charge/Colour \$40(G)</b>	<b>Repeat Setup/Colour \$20(G)</b>				
<b>4 Colour Process setup \$200(G)</b>	<b>Halftone Setup \$50(G)</b>				
<b>2nd side (same) \$0.60(C)</b>	<b>2nd side (different) \$0.70(C)</b>				



**Cabernet**  
**12.5oz (7556SR)**  
**16oz (7557SR)**

**Cabernet (5C)**

7556SR - 12.5oz - Imprint size: 1 1/2"h x 1 1/2"w - 12/case, 6 lbs  
 7557SR - 16oz - Imprint size: 1 3/4"h x 1 3/4"w - 12/case, 8 lbs

	72	144	288	504	1008
<b>12.5oz</b>	12.70	12.50	12.30	12.10	11.90
<b>16oz</b>	12.80	12.60	12.40	12.20	12.00
<b>Add. Colour</b>	1.00	0.90	0.85	0.80	0.75
<b>Setup Charge/Colour \$40(G)</b>	<b>Repeat Setup/Colour \$20(G)</b>				
<b>4 Colour Process setup \$200(G)</b>	<b>Halftone Setup \$50(G)</b>				
<b>2nd side (same) \$0.60(C)</b>	<b>2nd side (different) \$0.70(C)</b>				



**Wine Taster**  
**6.5oz (8466)**

**8466 - Wine Taster - 6.5oz (5C)**

Imprint size: 1 1/2"h x 1 1/2"w - 36/case, 12 lbs

	72	144	288	504	1008
<b>1 colour</b>	8.00	7.80	7.60	7.40	7.20
<b>Add. Colour</b>	1.00	0.90	0.85	0.80	0.75
<b>Setup Charge/Colour \$40(G)</b>	<b>Repeat Setup/Colour \$20(G)</b>				
<b>4 Colour Process setup \$200(G)</b>	<b>Halftone Setup \$50(G)</b>				
<b>2nd side (same) \$0.60(C)</b>	<b>2nd side (different) \$0.70(C)</b>				



**Ice Wine**  
**3.75oz (8588SR)**

**8588SR - Ice Wine - 3.75oz (5C)**

Imprint size: 1 1/4"h x 1 1/4"w - 24/case, 9 lbs

	72	144	288	504	1008
<b>1 colour</b>	9.65	9.45	9.25	9.05	8.85
<b>Add. Colour</b>	1.00	0.90	0.85	0.80	0.75
<b>Setup Charge/Colour \$40(G)</b>	<b>Repeat Setup/Colour \$20(G)</b>				
<b>4 Colour Process setup \$200(G)</b>	<b>Halftone Setup \$50(G)</b>				
<b>2nd side (same) \$0.60(C)</b>	<b>2nd side (different) \$0.70(C)</b>				





**Nuance Flute**  
6oz (3795)

**3795 - Nuance Flute - 6oz**

Imprint size: 2" h x 1 1/2" w - 12/case, 5lbs

(5C)

	72	144	288	504	1008
<b>1 colour</b>	8.90	8.70	8.50	8.30	8.10
<b>Add. Colour</b>	1.00	0.90	0.85	0.80	0.75
<b>Setup Charge/Colour \$40(G)</b>					
<b>4 Colour Process setup \$200(G)</b>					
<b>2nd side (same) \$0.60(C)</b>					
<b>Repeat Setup/Colour \$20(G)</b>					
<b>Halftone Setup \$50(G)</b>					
<b>2nd side (different) \$0.70(C)</b>					



**Napa Wine**  
7.75oz (8764)  
10.25oz (8756)

**Napa Wine**

8764 - 7.75oz Imprint size: 1 1/4" h x 1 1/4" w - 36/case, 14 lbs  
8756 - 10.25oz Imprint size: 1 1/2" h x 1 1/2" w - 36/case, 16 lbs

(5C)

	72	144	288	504	1008
<b>8764 - 7.75oz</b>	8.10	7.90	7.70	7.50	7.30
<b>8756 - 10.25oz</b>	8.20	8.00	7.80	7.60	7.40
<b>Add. Colour</b>	1.00	0.90	0.85	0.80	0.75
<b>Setup Charge/Colour \$40(G)</b>					
<b>4 Colour Process setup \$200(G)</b>					
<b>2nd side (same) \$0.60(C)</b>					
<b>Repeat Setup/Colour \$20(G)</b>					
<b>Halftone Setup \$50(G)</b>					
<b>2nd side (different) \$0.70(C)</b>					



**Belgium Beer**  
16oz (3808)

**3808 Belgium Beer - 16oz**

Imprint size: 2" h x 2" w - 12/case, 8 lbs

(5C)

	72	144	288	504	1008
<b>1 Colour</b>	8.10	7.90	7.70	7.50	7.30
<b>Add. Colour</b>	1.00	0.90	0.85	0.80	0.75
<b>Setup Charge/Colour \$40(G)</b>					
<b>4 Colour Process setup \$200(G)</b>					
<b>2nd side (same) \$0.60(C)</b>					
<b>Repeat Setup/Colour \$20(G)</b>					
<b>Halftone Setup \$50(G)</b>					
<b>2nd side (different) \$0.70(C)</b>					



**Embassy Beer**  
12oz (3725)

**3725 - Embassy Beer - 12oz**

Imprint size: 2" h x 2" w - 36/case, 22 lbs

(5C)

	72	144	288	504	1008
<b>1 Colour</b>	10.80	10.60	10.40	10.20	10.00
<b>Add. Colour</b>	1.00	0.90	0.85	0.80	0.75
<b>Setup Charge/Colour \$40(G)</b>					
<b>4 Colour Process setup \$200(G)</b>					
<b>2nd side (same) \$0.60(C)</b>					
<b>Repeat Setup/Colour \$20(G)</b>					
<b>Halftone Setup \$50(G)</b>					
<b>2nd side (different) \$0.70(C)</b>					





**Brandy**  
11.5oz (3705)

**3705 - Brandy - 11.5oz** (5C)

Imprint size: 1 1/2" h x 2" w - 24/case, 12 lbs

	72	144	288	504	1008
<b>1 Colour</b>	8.45	8.25	8.05	7.85	7.65
<b>Add. Colour</b>	1.00	0.90	0.85	0.80	0.75
<b>Setup Charge/Colour \$40(G)</b>			<b>Repeat Setup/Colour \$20(G)</b>		
<b>4 Colour Process setup \$200(G)</b>			<b>Halftone Setup \$50(G)</b>		
<b>2nd side (same) \$0.60(C)</b>			<b>2nd side (different) \$0.70(C)</b>		



**Mini Pub Glass**  
5oz (4809)

**4809 - Mini Pub Glass- 5oz** (5C)

Imprint size: 1 1/4" h x 1 1/4" w - 24/case, 7 lbs

	72	144	288	504	1008
<b>1 Colour</b>	6.20	6.05	5.90	5.75	5.60
<b>Add. Colour</b>	1.00	0.90	0.85	0.80	0.75
<b>Setup Charge/Colour \$40(G)</b>			<b>Repeat Setup/Colour \$20(G)</b>		
<b>4 Colour Process setup \$200(G)</b>			<b>Halftone Setup \$50(G)</b>		
<b>2nd side (same) \$0.60(C)</b>			<b>2nd side (different) \$0.70(C)</b>		



**Haworth Mug**  
10oz (5724)

**5724 - Haworth Mug - 10oz** (5C)

Imprint size: 2" h x 2 1/2" w - 36/case, 29 lbs

	72	144	288	504	1008
<b>1 Colour</b>	6.90	6.70	6.50	6.30	6.10
<b>Add. Colour</b>	1.00	0.90	0.85	0.80	0.75
<b>Setup Charge/Colour \$40(G)</b>			<b>Repeat Setup/Colour \$20(G)</b>		
<b>4 Colour Process setup \$200(G)</b>			<b>Halftone Setup \$50(G)</b>		
<b>2nd side (same) \$0.60(C)</b>			<b>2nd side (different) \$0.70(C)</b>		



**Nordic Mug**  
13oz (5213)

**5213 - Nordic Mug - 13oz** (5C)

Imprint size: 2 1/4" h x 2 1/2" w - 12/case, 12 lbs

	72	144	288	504	1008
<b>1 Colour</b>	7.95	7.75	7.55	7.35	7.15
<b>Add. Colour</b>	1.00	0.90	0.85	0.80	0.75
<b>Setup Charge/Colour \$40(G)</b>			<b>Repeat Setup/Colour \$20(G)</b>		
<b>4 Colour Process setup \$200(G)</b>			<b>Halftone Setup \$50(G)</b>		
<b>2nd side (same) \$0.60(C)</b>			<b>2nd side (different) \$0.70(C)</b>		



**262 Glass Coffee Cup**  
12oz

**262 - Glass Coffee Cup - 12oz**

Imprint size: 2" h x 2 1/4" w - 36/case, 32 lbs

(6C)

	<b>36</b>	<b>72</b>	<b>144</b>	<b>288</b>	<b>504</b>	<b>1008</b>
<b>1 Colour</b>	10.15	6.85	6.70	6.55	6.40	6.25
<b>Add. Colour</b>	1.25	1.00	0.90	0.85	0.80	0.75
<b>Setup Charge/Colour</b>	<b>\$40(G)</b>		<b>Repeat Setup/Colour \$20(G)</b>			
<b>4 Colour Process setup</b>	<b>\$200(G)</b>		<b>Halftone Setup \$50(G)</b>			
<b>2nd side (same)</b>	<b>\$0.60(C)</b>		<b>2nd side (different) \$0.70(C)</b>			



**Tapered Mug**  
15.5oz (5344)

**5344 - Tapered Mug - 15.5oz**

Imprint size: 1 3/4" h x 2 1/4" w - 6/case, 7lbs

(5C)

	<b>72</b>	<b>144</b>	<b>288</b>	<b>504</b>	<b>1008</b>
<b>1 Colour</b>	8.75	8.55	8.35	8.15	7.95
<b>Add. Colour</b>	1.00	0.90	0.85	0.80	0.75
<b>Setup Charge/Colour</b>	<b>\$40(G)</b>		<b>Repeat Setup/Colour \$20(G)</b>		
<b>4 Colour Process setup</b>	<b>\$200(G)</b>		<b>Halftone Setup \$50(G)</b>		
<b>2nd side (same)</b>	<b>\$0.50(C)</b>		<b>2nd side (different) \$0.60(C)</b>		



**Thumbprint**  
19.5oz (5303)

**Thumbprint - 19.5oz**

5303 - 19.5oz 2 1/2" h x 2 3/4" w - 24/case, 32 lbs

(5C)

	<b>72</b>	<b>144</b>	<b>288</b>	<b>504</b>	<b>1008</b>
<b>1 Colour</b>	8.95	8.75	8.55	8.35	8.15
<b>Add. Colour</b>	1.00	0.90	0.85	0.80	0.75
<b>Setup Charge/Colour</b>	<b>\$40(G)</b>		<b>Repeat Setup/Colour \$20(G)</b>		
<b>4 Colour Process setup</b>	<b>\$200(G)</b>		<b>Halftone Setup \$50(G)</b>		
<b>2nd side (same)</b>	<b>\$0.60(C)</b>		<b>2nd side (different) \$0.70(C)</b>		



**All Purpose**  
13.5oz (5544)

**5544 - All Purpose - 13.5oz**

Imprint size: 2" h x 2 1/2" w - 12/case, 11 lbs

(5C)

	<b>72</b>	<b>144</b>	<b>288</b>	<b>504</b>	<b>1008</b>
<b>1 Colour</b>	9.55	9.35	9.15	8.95	8.75
<b>Add. Colour</b>	1.00	0.90	0.85	0.80	0.75
<b>Setup Charge/Colour</b>	<b>\$40(G)</b>		<b>Repeat Setup/Colour \$20(G)</b>		
<b>4 Colour Process setup</b>	<b>\$200(G)</b>		<b>Halftone Setup \$50(G)</b>		
<b>2nd side (same)</b>	<b>\$0.60(C)</b>		<b>2nd side (different) \$0.70(C)</b>		







**Irish Coffee**  
8.5oz (5295)

**5295 - Irish Coffee - 8.5oz** (5C)

Imprint size: 2 "h x 2 "w - 24/case, 24 lbs

	72	144	288	504	1008
<b>1 Colour</b>	9.55	9.35	9.15	8.95	8.75
<b>Add. Colour</b>	1.00	0.90	0.85	0.80	0.75
<b>Setup Charge/Colour</b> \$40(G)			<b>Repeat Setup/Colour</b> \$20(G)		
<b>4 Colour Process setup</b> \$200(G)			<b>Halftone Setup</b> \$50(G)		
<b>2nd side (same)</b> \$0.60(C)			<b>2nd side (different)</b> \$0.70(C)		



**Drinking Jar**  
16oz (97084)

**97084 - Drinking Jar- 16oz** (5C)

Imprint size: 2 1/2"h x 2 1/4"w - 12/case, 12lbs

	72	144	288	504	1008
<b>1 colour</b>	8.20	8.00	7.80	7.60	7.40
<b>Add. Colour</b>	1.25	1.00	0.90	0.85	0.75
<b>Setup Charge/Colour</b> \$40(G)			<b>Repeat Setup/Colour</b> \$20(G)		
<b>4 Colour Process setup</b> \$200(G)			<b>Halftone Setup</b> \$50(G)		
<b>2nd side (same)</b> \$0.60(C)			<b>2nd side (different)</b> \$0.70(C)		



**Candy Jar**  
22oz (70996)

**70996 - Candy Jar- 22oz** (5C)

Imprint size: 2 1/4"h x 3"w - 12/case, 10lbs

	72	144	288	504	1008
<b>1 colour</b>	9.00	8.80	8.60	8.40	8.20
<b>Add. Colour</b>	1.00	0.90	0.85	0.80	0.75
<b>Setup Charge/Colour</b> \$40(G)			<b>Repeat Setup/Colour</b> \$20(G)		
<b>4 Colour Process setup</b> \$200(G)			<b>Halftone Setup</b> \$50(G)		
<b>2nd side (same)</b> \$0.60(C)			<b>2nd side (different)</b> \$0.70(C)		



**1L Beer Boot Glass**

**Beer Boot Glass - 1L** (4C)

Imprint size: 2 1/2"h x 2 1/2"w - 24/case, 48 lbs

	36	72	144	288
<b>1 colour</b>	21.35	15.00	14.50	14.00
<b>Add. Colour</b>	1.25	1.00	0.90	0.85
<b>Setup Charge/Colour</b> \$40(G)			<b>Repeat Setup/Colour</b> \$20(G)	
<b>4 Colour Process setup</b> \$200(G)			<b>Halftone Setup</b> \$50(G)	
<b>2nd side (same)</b> \$0.60(C)			<b>2nd side (different)</b> \$0.70(C)	

## About Our Company

We specialize in printing on all chinaware and glassware. With over 30 years of ceramic printing experience, Dar-Mar can offer one color to multi-color and 4 color process printing for chinaware and glassware. All our ceramic products are baked at 1350 F, and glassware at 1150 F, making the imprint 100% dishwasher safe. All production is completed in house, which allows for quick turnaround times, and efficient service.

Check out our website to see what items we regularly have available. If you are interested in an item that is not in our catalogue or website, let us know and we may be able to source it for you.

Are you tired of using other printers where you had problems where the imprint fades or washes off in the dishwasher, broken promises, rush order delays or missed deadlines? When working with us, that won't be an issue. If we accept your order (Rush orders included), we guarantee to meet your deadlines with amazing quality, friendly service, and great prices.

Contact us now for a quote, or any questions/ inquiries, and we would be happy to be of service. We want to earn your business, and prove that we are your most reliable ceramic and glass promotional drinkware supplier.

### **100% Dishwasher Safe**

Don't throw your money away with printing that washes off.  
Our printing is 100% permanent and will never fade, wash or scratch off.

### **Multi-Colour & 4 Colour Process**

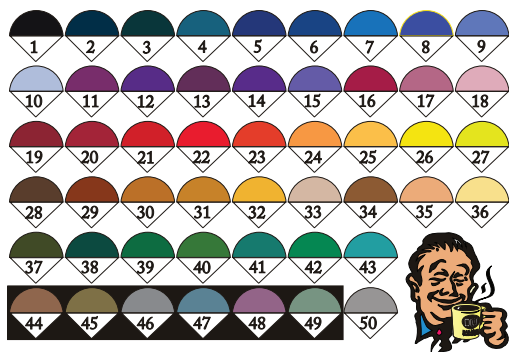
We are capable of printing an unlimited amount of colours with precise registration and halftones.

### **White Backing**

No Extra Charge for White Backing Behind Logo when Printing on Coloured mugs  
(When Needed) - We only charge for colours you can actually see.

### **Reliable**

If we accept your order, you can rest assured that your order will be delivered on time.



**Colour Chart Available  
upon request**

## **Vectorize**

### Your Spot Color Artwork

- Scanned Images
- Low Resolution .jpeg Artwork

**\$50** (c) - 1 colour  
\$10(c) for every additional color

(Does not apply to 4 color process or halftones)