

The Ceramic & Glass Drinkware Specialists



2021 Edition

DAR-MAR

MANUFACTURING LTD

Quality Printing and Service Since 1995

We Offer Printing on Customer Supplied Mugs and Glassware



Do you have any blank ceramic mugs or glassware on hand that you would like custom printed?
We can quote a price for printing only on your supplied mugs or glassware for a discounted price.

Minimum 36pcs.

Please contact for any questions or inquiries.

COLOURED BASE GLASSWARE

\$1.25 (c)
Minimum
72pcs



Add Colour and Style to your Glassware with a Custom Coloured Base.

No extra setup charge if the base uses the same colour as the main imprint
Works on any glass style with a smooth flat base.

CONTACT US FOR ANY QUESTIONS OR INQUIRIES!

Satin Etch (Frost)



Colour base

4 Colour Process



Personalization

Precious Metal



Gold Halo

Print on Bottom (Glass)



Print on Bottom (Ceramic)



Iridescent Colours (Microwavable)



Print on Handle

Multi Colour



3419 Econo stoneware



White

3419 - Econo Stoneware Mug - 11oz (6C)

Imprint size: 2 3/4"h x 2 1/2"w x 6 7/8"wrap - 36/case, 30 lbs

	36	72	144	288	504	1008
White	6.35	3.75	3.55	3.45	3.35	3.25
Add. Colour	1.25	1.00	0.90	0.85	0.80	0.75
Setup Charge/Colour	\$40(G)		Repeat Setup/Colour \$20(G)			
4 Colour Process setup	\$200(G)		Halftone Setup \$50(G)			
2nd side (same)	\$0.60(C)		2nd side (different) \$0.70(C)			
			2nd side (wrap) \$0.80(C)			

3421 Porcelain Promo



White

3421 - Porcelain Promo Mug - 11oz (6C)

Imprint size: 2 3/4"h x 2 1/2"w x 6 7/8"wrap - 36/case, 30 lbs

	36	72	144	288	504	1008
White	6.60	3.95	3.75	3.65	3.55	3.45
Add. Colour	1.25	1.00	0.90	0.85	0.80	0.75
Setup Charge/Colour	\$40(G)		Repeat Setup/Colour \$20(G)			
4 Colour Process setup	\$200(G)		Halftone Setup \$50(G)			
2nd side (same)	\$0.60(C)		2nd side (different) \$0.70(C)			
			2nd side (wrap) \$0.80(C)			

3419 Ceramic 'C'



Black

Green

Blue

Red Out/ White In

Burgundy

Yellow

3419 - Ceramic 'C' Mug - 11oz (6C)

Imprint size: 2 3/4"h x 2 1/2"w x 6 7/8"wrap - 36/case, 30 lbs

	36	72	144	288	504	1008
Black, Green	7.75	4.85	4.65	4.45	4.25	4.05
Blue	8.05	5.05	4.85	4.65	4.45	4.25
Red out/White In	9.25	5.95	5.75	5.55	5.35	5.15
Burgandy, Yellow	8.40	5.35	5.15	4.95	4.75	4.55
Add. Colours	1.25	1.00	0.90	0.85	0.80	0.75
Setup Charge/Colour	\$40(G)		Repeat Setup/Colour \$20(G)			
4 Colour Process setup	\$200(G)		Halftone Setup \$50(G)			
2nd side (same)	\$0.60(C)		2nd side (different) \$0.70(C)			
			2nd side (wrap) \$0.80(C)			

3419HL - Matte 'C' - 11oz (6C)

Imprint size: 2 3/4"h x 2 1/2"w x 6 7/8"wrap - 36/case, 30 lbs

	36	72	144	288	504	1008
White in	9.40	6.05	5.85	5.65	5.45	5.25
Red in	9.65	6.25	6.05	5.85	5.65	5.45
Add. Colour	1.25	1.00	0.90	0.85	0.80	0.75
Setup Charge/Colour	\$40(G)		Repeat Setup/Colour \$20(G)			
4 Colour Process setup	\$200(G)		Halftone Setup \$50(G)			
2nd side (same)	\$0.60(C)		2nd side (different) \$0.70(C)			
			2nd side (wrap) \$0.80(C)			

3419HL MATTE 'C'



White in

Red in

3435 El Grande



White

Black

Blue

3435 - El Grande - 15oz (6C)

Imprint size: 3 1/4"h x 2 3/4"w x 7 3/4"wrap - 36/case, 38 lbs

	36	72	144	288	504	1008
White	8.55	5.45	5.25	5.05	4.85	4.65
Black	9.35	6.05	5.85	5.65	5.45	5.25
Blue	9.65	6.25	6.05	5.85	5.65	5.45
Add. Colour	1.25	1.00	0.90	0.85	0.80	0.75
Setup Charge/Colour	\$40(G)		Repeat Setup/Colour \$20(G)			
4 Colour Process setup	\$200(G)		Halftone Setup \$50(G)			
2nd side (same)	\$0.60(C)		2nd side (different) \$0.70(C)			
			2nd side (wrap) \$0.80(C)			



Price subject to change without notice

Price includes a 1 Colour Imprint on 1 side

9911 Halo Bistro



1376 Bistro



9911 - Halo Bistro - 12oz

Imprint size: 2" h x 2 1/2" w - 36/case, 33 lbs

(6C)

	36	72	144	288	504	1008
ALL	9.40	6.05	5.85	5.65	5.45	5.25
Add. Colour	1.25	1.00	0.90	0.85	0.80	0.75
Setup Charge/Colour	\$40(G)		Repeat Setup/Colour \$20(G)			
4 Colour Process setup	\$200(G)		Halftone Setup \$50(G)			
2nd side (same)	\$0.60(C)		2nd side (different) \$0.70(C)			

1376 - Bistro - 14oz

Imprint size: 2" h x 2 1/2" w - 36/case, 33 lbs

(6C)

	36	72	144	288	504	1008
White	8.85	5.65	5.45	5.25	5.05	4.85
Black	9.75	6.35	6.15	5.95	5.75	5.55
Blue	10.05	6.55	6.35	6.15	5.95	5.75
Red out/White In	10.55	6.95	6.75	6.55	6.35	6.15
Add. Colour	1.25	1.00	0.90	0.85	0.80	0.75
Setup Charge/Colour	\$40(G)		Repeat Setup/Colour \$20(G)			
4 Colour Process setup	\$200(G)		Halftone Setup \$50(G)			
2nd side (same)	\$0.60(C)		2nd side (different) \$0.70(C)			

5176 Creamy Halo Bistro



1376M Matte Black/Colour in Bistro



5176 - Creamy Halo Bistro - 12oz

Imprint size: 2" h x 2 1/2" w - 36/case, 33 lbs

(6C)

	36	72	144	288	504	1008
ALL	10.45	6.85	6.65	6.45	6.25	6.05
Add. Colour	1.25	1.00	0.90	0.85	0.80	0.75
Setup Charge/Colour	\$40(G)		Repeat Setup/Colour \$20(G)			
4 Colour Process setup	\$200(G)		Halftone Setup \$50(G)			
2nd side (same)	\$0.60(C)		2nd side (different) \$0.70(C)			

1376M - Matte Black/Colour in Bistro - 15oz

Imprint size: 2" h x 2 1/2" w - 36/case, 33 lbs

(6C)

	36	72	144	288	504	1008
Blue	10.80	7.15	6.95	6.75	6.55	6.35
Green	10.80	7.15	6.95	6.75	6.55	6.35
Red	11.05	7.35	7.15	6.95	6.75	6.55
Orange	11.05	7.35	7.15	6.95	6.75	6.55
Add. Colour	1.25	1.00	0.90	0.85	0.80	0.75
Setup Charge/Colour	\$40(G)		Repeat Setup/Colour \$20(G)			
4 Colour Process setup	\$200(G)		Halftone Setup \$50(G)			
2nd side (same)	\$0.60(C)		2nd side (different) \$0.70(C)			



1881 Matte Black/Colour in (Robusto)



(6C)

1881 - Matte Black/Colour in Robusto - 14oz

Imprint size: 2" h x 2" w - 36/case, 39 lbs

	36	72	144	288	504	1008
Blue	11.35	7.55	7.35	7.15	6.95	6.75
Green	11.35	7.55	7.35	7.15	6.95	6.75
Red	11.60	7.75	7.55	7.35	7.15	6.95
Orange	11.60	7.75	7.55	7.35	7.15	6.95
Yellow	11.35	7.55	7.35	7.15	6.95	6.75
Add. Colour	1.25	1.00	0.90	0.85	0.80	0.75
Setup Charge/Colour	\$40(G)		Repeat Setup/Colour \$20(G)			
4 Colour Process setup	\$200(G)		Halftone Setup \$50(G)			
2nd side (same)	\$0.60(C)		2nd side (different) \$0.70(C)			

2402 Matte White/Colour in (Robustia)



(6C)

2402 - Matte White/Colour in Robustia - 14oz

Imprint size: 2" h x 2" w - 36/case, 39 lbs

	36	72	144	288	504	1008
White	11.05	7.35	7.15	6.95	6.75	6.55
Black	11.05	7.35	7.15	6.95	6.75	6.55
Blue	11.05	7.35	7.15	6.95	6.75	6.55
Green	11.05	7.35	7.15	6.95	6.75	6.55
Red	11.35	7.55	7.35	7.15	6.95	6.75
Add. Colour	1.25	1.00	0.90	0.85	0.80	0.75
Setup Charge/Colour	\$40(G)		Repeat Setup/Colour \$20(G)			
4 Colour Process setup	\$200(G)		Halftone Setup \$50(G)			
2nd side (same)	\$0.60(C)		2nd side (different) \$0.70(C)			

1335 Short Funnel



White

Black

Blue

1335 - Short Funnel - 12oz

Imprint size: 2" h x 2" w - 36/case, 31 lbs

(6C)

	36	72	144	288	504	1008
White	7.65	4.75	4.55	4.35	4.15	3.95
Black	8.70	5.55	5.35	5.15	4.95	4.75
Blue	8.95	5.75	5.55	5.35	5.15	4.95
Add. Colour	1.25	1.00	0.90	0.85	0.80	0.75
Setup Charge/Colour	\$40(G)		Repeat Setup/Colour \$20(G)			
4 Colour Process setup	\$200(G)		Halftone Setup \$50(G)			
2nd side (same)	\$0.60(C)		2nd side (different) \$0.70(C)			

9624 Jasmine



Blue

Green



Red

Orange

9624 - Jasmine - 11oz

Imprint size: 2" h x 2" w - 36/case, 29 lbs

(6C)

	36	72	144	288	504	1008
All Colours	7.95	4.95	4.75	4.55	4.35	4.15
Add. Colour	1.25	1.00	0.90	0.85	0.80	0.75
Setup Charge/Colour	\$40(G)		Repeat Setup/Colour \$20(G)			
4 Colour Process setup	\$200(G)		Halftone Setup \$50(G)			
2nd side (same)	\$0.60(C)		2nd side (different) \$0.70(C)			



1527S Matte White/Colour in (Venetia)



1526S Matte Black/Colour in (Veneto)



1527S - Matte White/Colour in Venetia - 12oz

Imprint size: 2" h x 2" w - 36/case, 32 lbs

	36	72	144	288	504	1008
Black	10.35	6.75	6.55	6.35	6.15	5.95
Blue	10.35	6.75	6.55	6.35	6.15	5.95
Green	10.35	6.75	6.55	6.35	6.15	5.95
Red	10.85	7.15	6.95	6.75	6.55	6.35
Add. Colour	1.25	1.00	0.90	0.85	0.80	0.75
Setup Charge/Colour	\$40(G)		Repeat Setup/Colour \$20(G)			
4 Colour Process setup	\$200(G)		Halftone Setup \$50(G)			
2nd side (same)	\$0.60(C)		2nd side (different) \$0.70(C)			

1526S - Matte Black/Colour in Veneto - 12oz

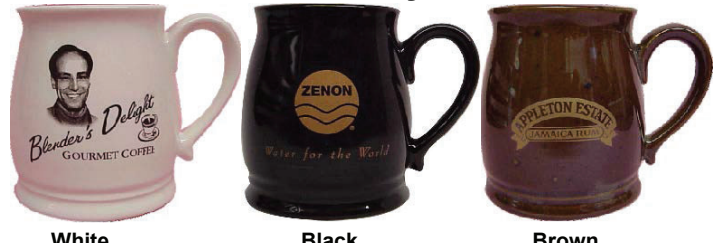
Imprint size: 2" h x 2" w - 36/case, 32 lbs

	36	72	144	288	504	1008
Yellow	10.35	6.75	6.55	6.35	6.15	5.95
Blue	10.35	6.75	6.55	6.35	6.15	5.95
Green	10.35	6.75	6.55	6.35	6.15	5.95
Red	10.85	7.15	6.95	6.75	6.55	6.35
Add. Colour	1.25	1.00	0.90	0.85	0.80	0.75
Setup Charge/Colour	\$40(G)		Repeat Setup/Colour \$20(G)			
4 Colour Process setup	\$200(G)		Halftone Setup \$50(G)			
2nd side (same)	\$0.60(C)		2nd side (different) \$0.70(C)			

8919 Kona



TS0148 Pot Belly - 13oz



8919 - Kona - 15oz (6C)

Imprint size: 2" h x 3" w - 36/case, 43lbs

	36	72	144	288	504	1008
White	9.75	6.35	6.15	5.95	5.75	5.55
Black	10.60	6.95	6.75	6.55	6.35	6.15
Blue	10.85	7.15	6.95	6.75	6.55	6.35
Add. Colour	1.25	1.00	0.90	0.85	0.80	0.75
Setup Charge/Colour	\$40(G)		Repeat Setup/Colour \$20(G)			
4 Colour Process setup	\$200(G)		Halftone Setup \$50(G)			
2nd side (same)	\$0.60(C)		2nd side (different) \$0.70(C)			

TS0148 - Pot Belly - 13oz (6C)

Imprint size: 2" h x 2" w - 36/case, 36 lbs

	36	72	144	288	504	1008
White	9.55	6.15	5.95	5.75	5.55	5.35
Black	9.80	6.35	6.15	5.95	5.75	5.55
Brown w/ Speckle	10.05	6.55	6.35	6.00	5.95	5.75
Add. Colour	1.25	1.00	0.90	0.85	0.80	0.75
Setup Charge/Colour	\$40(G)		Repeat Setup/Colour \$20(G)			
4 Colour Process setup	\$200(G)		Halftone Setup \$50(G)			
2nd side (same)	\$0.60(C)		2nd side (different) \$0.70(C)			



1302 Comfort 12oz



White

Black

Blue

1302 - Comfort - 12oz

Imprint size: 2" h x 2 1/4" w - 36/case, 33 lbs

(6C)

	36	72	144	288	504	1008
White	8.55	5.45	5.25	5.05	4.85	4.65
Black	8.95	5.75	5.55	5.35	5.15	4.95
Blue	9.25	5.95	5.75	5.55	5.35	5.15
Add. Colour	1.25	1.00	0.90	0.85	0.80	0.75

Setup Charge/Colour \$40(G)

Repeat Setup/Colour \$20(G)

4 Colour Process setup \$200(G)

Halftone Setup \$50(G)

2nd side (same) \$0.60(C)

2nd side (different) \$0.70(C)

A52 Rustic - 14oz



Black

Blue

A52 - Rustic - 14oz

Imprint size: 2" h x 3" w - 36/case, 35 lbs

(6C)

	36	72	144	288	504	1008
Black	8.75	5.55	5.35	5.15	4.95	4.75
Blue	9.00	5.75	5.55	5.35	5.15	4.95
Add. Colour	1.25	1.00	0.90	0.85	0.80	0.75

Setup Charge/Colour \$40(G)

Repeat Setup/Colour \$20(G)

4 Colour Process setup \$200(G)

Halftone Setup \$50(G)

2nd side (same) \$0.60(C)

2nd side (different) \$0.70(C)



White

611 - Coffee House - 9oz

Imprint size: 2" h x 2" w - 36/case, 30 lbs

(6C)

	36	72	144	288	504	1008
White	6.85	4.15	3.95	3.75	3.55	3.35
Add. Colour	1.25	1.00	0.90	0.85	0.80	0.75

Setup Charge/Colour \$40(G)

Repeat Setup/Colour \$20(G)

4 Colour Process setup \$200(G)

Halftone Setup \$50(G)

2nd side (same) \$0.60(C)

2nd side (different) \$0.70(C)

Espresso Cup/Saucer Set



TC3 - 4oz

Espresso Sets

TC3 - Imprint size: 1 1/2" h x 1 3/4" w

(6C)

	36	72	144	288	504	1008
TC3 - 4oz	12.20	8.15	7.95	7.75	7.55	7.35
Add. Colour	1.25	1.00	0.90	0.85	0.80	0.75

Setup Charge/Colour \$40(G)

Repeat Setup/Colour \$20(G)

4 Colour Process setup \$200(G)

Halftone Setup \$50(G)

2nd side (same) \$0.60(C)

2nd side (different) \$0.70(C)

D25 Mini Mug - 2oz



D25 - Mini Mug - 2oz

Imprint size: 1 5/8" h x 1 3/4" w - 144/case, 27 lbs

(6C)

	48	72	144	288	504	1008
White	5.55	4.50	4.35	4.20	4.05	3.90
Add. Colour	1.15	1.00	0.90	0.85	0.80	0.75

Setup Charge/Colour \$40(G)

Repeat Setup/Colour \$20(G)

4 Colour Process setup \$200(G)

Halftone Setup \$50(G)

2nd side (same) \$0.60(C)

2nd side (different) \$0.70(C)



CC - Ceramic Coaster/Lids

Imprint size: 2 1/2" h x 2 1/2" w - 144/case, 26lbs

(6C)

	36	72	144	288	504	1008
White	5.55	3.15	2.95	2.75	2.55	2.35
Add. Colour	1.25	1.00	0.90	0.85	0.80	0.75
Setup Charge/Colour	\$40(G)		Repeat Setup/Colour \$20(G)			
4 Colour Process setup	\$200(G)		Halftone Setup \$50(G)			

CC - Ceramic Coaster/Lids



Coupe Plates

Souvenir plates 8" or 9" coup w/ gold rim

(6C)

	36	72	144	288	504	1008
8" with 6" Print	16.15	11.15	10.95	10.75	10.55	10.35
9" with 7" Print	17.45	12.15	11.95	11.75	11.55	11.35
Back Stamp	2.00	1.75	1.65	1.60	1.55	1.50
Add. Colour	1.25	1.00	0.90	0.85	0.80	0.75
Setup Charge/Colour	\$40(G)		Repeat Setup/Colour \$20(G)			
4 Colour Process setup	\$200(G)		Halftone Setup \$50(G)			

Coupe Plates



563970

12" Dinner Plates (Print side on Rim only) (6C)

Imprint size: 1" h x 4" w - 12/case

	36	72	144	288	504	1008
12" Dinner Plate	22.65	16.00	15.80	15.60	15.40	15.20
Add. Colour	1.25	1.00	0.90	0.85	0.80	0.75
Setup Charge/Colour	\$40(G)		Repeat Setup/Colour \$20(G)			
4 Colour Process setup	\$200(G)		Halftone Setup \$50(G)			
			2nd location \$1.25(C)			

12" Dinner Plate



563970

563952 - Cereal bowl

Imprint size: 3/4" h x 2" w - 36/case,

(6C)

	36	72	144	288	504	1008
Cereal bowl	10.65	7.00	6.80	6.60	6.40	6.20
Add. Colour	1.25	1.00	0.90	0.85	0.80	0.75
Setup Charge/Colour	\$40(G)		Repeat Setup/Colour \$20(G)			
4 Colour Process setup	\$200(G)		Halftone Setup \$50(G)			

Cereal bowl



(563952)

5.6" Diameter

Price subject to change without notice

Price includes a 1 Colour Imprint on 1 side



1032 Econo Shot Glass
2oz

1032 - Econo Shot Glass - 2oz (5C)

Imprint size: 1 1/4"h x 1 1/2"w - 144/case, 25 lbs

	72	144	288	504	1008
1 Colour	3.75	3.60	3.45	3.30	3.15
Add. Colour	1.00	0.90	0.85	0.80	0.75
Setup Charge/Colour \$40(G)			Repeat Setup/Colour \$20(G)		
4 Colour Process setup \$200(G)			Halftone Setup \$50(G)		
2nd side (same) \$0.60(C)			2nd side (different) \$0.70(C)		



H5057 Shot Glass
2oz

H5057 - Shot Glass - 2oz (5C)

Imprint size: 1 1/4"h x 1 1/2"w - 72/case, 14lbs

	72	144	288	504	1008
1 Colour	4.35	4.20	4.05	3.90	3.75
Add. Colour	1.00	0.90	0.85	0.80	0.75
Setup Charge/Colour \$40(G)			Repeat Setup/Colour \$20(G)		
4 Colour Process setup \$200(G)			Halftone Setup \$50(G)		
2nd side (same) \$0.60(C)			2nd side (different) \$0.70(C)		



P5480 Shooter
2oz

P5480 - Shooter - 2oz (5C)

Imprint size: 2 1/2"h x 1 1/2"w - 72/case, 19lbs

	72	144	288	504	1008
1 Colour	4.25	4.10	3.95	3.80	3.65
Add. Colour	1.00	0.90	0.85	0.80	0.75
Setup Charge/Colour \$40(G)			Repeat Setup/Colour \$20(G)		
4 Colour Process setup \$200(G)			Halftone Setup \$50(G)		
2nd side (same) \$0.60(C)			2nd side (different) \$0.70(C)		



19188 Square Shot
2.5oz

19188 - Square Shot Glass - 2.5oz (5C)

Imprint size: 1 1/4"h x 1 1/4"w - 72/case, 20lbs

	72	144	288	504	1008
1 Colour	4.55	4.40	4.25	4.10	3.95
Add. Colour	1.00	0.90	0.85	0.80	0.75
Setup Charge/Colour \$40(G)			Repeat Setup/Colour \$20(G)		
4 Colour Process setup \$200(G)			Halftone Setup \$50(G)		
2nd side (same) \$0.60(C)			2nd side (different) \$0.70(C)		



J6287 Fluted Whiskey
2oz

J6287 - Fluted Whiskey - 2oz (6C)

Imprint size: 1 1/4"h x 1 1/2"w - 48/case, 22 lbs

	48	72	144	288	504	1008
1 Colour	6.45	5.45	5.30	5.15	5.00	4.85
Add. Colour	1.15	1.00	0.90	0.85	0.80	0.75
Setup Charge/Colour \$40(G)			Repeat Setup/Colour \$20(G)			
4 Colour Process setup \$200(G)			Halftone Setup \$50(G)			
2nd side (same) \$0.60(C)			2nd side (different) \$0.70(C)			



P5654 Boreal
3oz

P5654 - Boreal - 3oz (6C)

Imprint size: 1 1/2"h x 1 1/2"w - 48/case, 14lbs

	48	72	144	288	504	1008
1 Colour	5.55	4.55	4.40	4.25	4.10	3.95
Add. Colour	1.15	1.00	0.90	0.85	0.80	0.75
Setup Charge/Colour \$40(G)			Repeat Setup/Colour \$20(G)			
4 Colour Process setup \$200(G)			Halftone Setup \$50(G)			
2nd side (same) \$0.60(C)			2nd side (different) \$0.70(C)			





5262 Super Mug
1L/34oz

5262 - Super Mug - 1L / 34oz (6C)

Imprint size: 3" h x 4" w - 12/case, 39 lbs

	36	72	144	288	504	1008
1 Colour	22.30	15.65	15.45	15.25	15.05	14.85
Add. Colour	1.25	1.00	0.90	0.85	0.80	0.75
Setup Charge/Colour	\$40(G)		Repeat Setup/Colour \$20(G)			
4 Colour Process setup	\$200(G)		Halftone Setup \$50(G)			
2nd side (same)	\$0.60(C)		2nd side (different) \$0.70(C)			



38518 Britannia
19.5oz

38518 - Britannia - 19.5oz (6C)

Imprint size: 2" h x 2" w - 24/case, 30 lbs

	48	72	144	288	504	1008
1 Colour	8.95	7.95	7.75	7.55	7.35	7.15
Add. Colour	1.15	1.00	0.90	0.85	0.80	0.75
Setup Charge/Colour	\$40(G)		Repeat Setup/Colour \$20(G)			
4 Colour Process setup	\$200(G)		Halftone Setup \$50(G)			
2nd side (same)	\$0.60(C)		2nd side (different) \$0.70(C)			



1272 Econo Beer Stein
13oz

1272 Econo Beer Stein - 13oz (6C)

Imprint size: 3" h x 2 1/2" w - 24/case, 33 lbs

	36	72	144	288	504	1008
1 Colour	9.90	6.45	6.30	6.15	6.00	5.85
Add. Colour	1.25	1.00	0.90	0.85	0.80	0.75
Setup Charge/Colour	\$40(G)		Repeat Setup/Colour \$20(G)			
4 Colour Process setup	\$200(G)		Halftone Setup \$50(G)			
2nd side (same)	\$0.60(C)		2nd side (different) \$0.70(C)			



720 Econo Beer Stein
16oz

720 Econo Beer Stein - 16oz (6C)

Imprint size: 3 1/2" h x 2 1/2" w - 24/case, 44 lbs

	48	72	144	288	504	1008
1 Colour	8.00	7.00	6.85	6.70	6.55	6.40
Add. Colour	1.15	1.00	0.90	0.85	0.80	0.75
Setup Charge/Colour	\$40(G)		Repeat Setup/Colour \$20(G)			
4 Colour Process setup	\$200(G)		Halftone Setup \$50(G)			
2nd side (same)	\$0.60(C)		2nd side (different) \$0.70(C)			



Sports Stein
15oz (53331)
25oz (53404)

Sports Stein

53331 15oz Imprint size: 3”h x 2 1/2”w - 12/case, 18 lbs

53404 25oz Imprint size: 3 1/2”h x 2 3/4”w - 12/case, 32 lbs

	36	72	144	288	504	1008
53331 - 15oz	12.40	8.35	8.15	7.95	7.75	7.55
53404 - 25oz	16.45	11.40	11.20	11.00	10.80	10.60
Add. Colour	1.25	1.00	0.90	0.85	0.80	0.75
Setup Charge/Colour	\$40(G)			Repeat Setup/Colour \$20(G)		
4 Colour Process setup	\$200(G)			Half-tone Setup \$50(G)		
2nd side (same)	\$0.60(C)			2nd side (different) \$0.70(C)		

(6C)



C8670 Ferdinand
18oz

C8670 - Ferdinand - 18oz

Imprint size: 2 3/4”h x 2 1/2”w - 12/case, 20 lbs

(6C)

	36	72	144	288	504	1008
1 Colour	14.20	9.70	9.50	9.30	9.10	8.90
Add. Colour	1.25	1.00	0.90	0.85	0.80	0.75
Setup Charge/Colour	\$40(G)			Repeat Setup/Colour \$20(G)		
4 Colour Process setup	\$200(G)			Half-tone Setup \$50(G)		
2nd side (same)	\$0.60(C)			2nd side (different) \$0.70(C)		



77346 Distinction
14oz

77346 - Distinction - 14oz

Imprint size: 3”h x 2 1/2”w - 12/case, 18 lbs

(6C)

	36	72	144	288	504	1008
1 Colour	12.00	8.00	7.80	7.60	7.40	7.20
Add. Colour	1.25	1.00	0.90	0.85	0.80	0.75
Setup Charge/Colour	\$40(G)			Repeat Setup/Colour \$20(G)		
4 Colour Process setup	\$200(G)			Half-tone Setup \$50(G)		
2nd side (same)	\$0.60(C)			2nd side (different) \$0.70(C)		



58664 Koblenz
15oz

58664 - Koblenz - 15oz

Imprint size: 3”h x 2 1/2”w - 24/case, 33 lbs

(6C)

	48	72	144	288	504	1008
1 Colour	8.90	7.90	7.70	7.50	7.30	7.10
Add. Colour	1.15	1.00	0.90	0.85	0.80	0.75
Setup Charge/Colour	\$40(G)			Repeat Setup/Colour \$20(G)		
4 Colour Process setup	\$200(G)			Half-tone Setup \$50(G)		
2nd side (same)	\$0.60(C)			2nd side (different) \$0.70(C)		





G3844 Pub Pilsner - 16oz
36230 Pub Pilsner - 20oz
36229 Pub Pilsner - 23oz

Pub Pilsner

G3844 16oz Imprint size: 1 3/4" h x 2 1/2" w - 36/case, 31 lbs
 36230 20oz Imprint size: 2" h x 2 3/4" w - 24/case, 27 lbs
 36229 23oz Imprint size: 2" h x 2 3/4" w - 24/case, 27 lbs

	36	48	72	144	288	504	1008
16oz	10.30	X	6.75	6.55	6.35	6.15	5.95
20oz	X	8.35	7.35	7.15	6.95	6.75	6.55
23oz	X	6.75	7.75	7.55	7.35	7.15	6.95
Add Colour	1.25	1.15	1.00	0.90	0.85	0.80	0.75
Setup Charge/Colour	\$40(G)			Repeat Setup/Colour \$20(G)			
4 Colour Process setup	\$200(G)			Halftone Setup \$50(G)			
2nd side (same)	\$0.60(C)			2nd side (different) \$0.70(C)			



Oslo Pilsner
16oz H6283 & 20oz H6288

Oslo Pilsner

16oz Imprint size: 2" h x 2" w - 24/case, 19 lbs
 20oz Imprint size: 2 1/4" h x 2 1/4" w - 24/case, 25 lbs

	48	72	144	288	504	1008
H6283 - 16oz	7.75	6.75	6.55	6.35	6.15	5.95
H6288 - 20oz	8.35	7.35	7.15	6.95	6.75	6.55
Add. Colour	1.15	1.00	0.90	0.85	0.80	0.75
Setup Charge/Colour	\$40(G)			Repeat Setup/Colour \$20(G)		
4 Colour Process setup	\$200(G)			Halftone Setup \$50(G)		
2nd side (same)	\$0.60(C)			2nd side (different) \$0.70(C)		



Grand Pilsner
12oz (21054)
16oz (21053)
20oz (19416)
23oz (19415)

Grand Pilsner

21054 12oz Imprint size: 1 1/2" h x 2" w - 36/case, 27 lbs
 21053 16oz Imprint size: 2" h x 2" w - 36/case, 31 lbs
 19416 20oz Imprint size: 2 1/4" h x 2 1/4" w - 24/case, 26 lbs
 19415 23oz Imprint size: 2 1/4" h x 2 1/4" w - 24/case, 26 lbs

	36	48	72	144	288	504	1008
12oz	9.65	X	6.25	6.05	5.85	5.65	5.45
16oz	10.30	X	6.75	6.55	6.35	6.15	5.95
20oz	X	8.35	7.35	7.15	6.95	6.75	6.55
23oz	X	8.75	7.75	7.55	7.35	7.15	6.95
Add Colour	1.25	1.15	1.00	0.90	0.85	0.80	0.75
Setup Charge/Colour	\$40(G)			Repeat Setup/Colour \$20(G)			
4 Colour Process setup	\$200(G)			Halftone Setup \$50(G)			
2nd side (same)	\$0.60(C)			2nd side (different) \$0.70(C)			



N2644 Classic
14oz

N2644 - Classic - 14oz

Imprint size: 2" h x 2" w - 12/case, 9 lbs

	36	72	144	288	504	1008
1 Colour	14.00	9.55	9.35	9.15	8.95	8.75
Add. Colour	1.25	1.00	0.90	0.85	0.80	0.75
Setup Charge/Colour	\$40(G)			Repeat Setup/Colour \$20(G)		
4 Colour Process setup	\$200(G)			Halftone Setup \$50(G)		
2nd side (same)	\$0.60(C)			2nd side (different) \$0.70(C)		





Wallibecher
16oz (C5872)
20oz (C3526)

Wallibecher

(6C)

C5872 16oz Imprint size: 1 3/4" h x 1 3/4" w - 12/case, 8 lbs
 C3526 20oz Imprint size: 2" h x 2" w - 12/case, 10 lbs

	36	72	144	288	504	1008
C5872 - 16oz	9.45	6.10	5.90	5.70	5.50	5.30
C3526 - 20oz	9.85	6.40	6.20	6.00	5.80	5.60
Add. Colour	1.25	1.00	0.90	0.85	0.80	0.75
Setup Charge/Colour	\$40(G)		Repeat Setup/Colour \$20(G)			
4 Colour Process setup	\$200(G)		Halftone Setup \$50(G)			
2nd side (same)	\$0.60(C)		2nd side (different) \$0.70(C)			



78365 Tulip
20oz

78365 - Tulip - 20oz

(6C)

Imprint size: 1 3/4" h x 2 3/4" w - 24/case, 18lbs

	48	72	144	288	504	1008
1 Colour	7.25	6.25	6.05	5.85	5.65	5.45
Add. Colour	1.15	1.00	0.90	0.85	0.80	0.75
Setup Charge/Colour	\$40(G)		Repeat Setup/Colour \$20(G)			
4 Colour Process setup	\$200(G)		Halftone Setup \$50(G)			
2nd side (same)	\$0.60(C)		2nd side (different) \$0.70(C)			



G3960 Mixing Glass
16oz

G3960 - Mixing Glass - 16oz

(6C)

Imprint size: 3" h x 2" w - 24/case, 23 lbs

	36	72	144	288	504	1008
1 Colour	6.25	5.25	5.05	4.85	4.65	4.45
Add. Colour	1.15	1.00	0.90	0.85	0.80	0.75
Setup Charge/Colour	\$40(G)		Repeat Setup/Colour \$20(G)			
4 Colour Process setup	\$200(G)		Halftone Setup \$50(G)			
2nd side (same)	\$0.60(C)		2nd side (different) \$0.70(C)			



Nonic
G5025 - 16oz
58220 - 19oz

Nonic

(5C)

G5025 16oz - Imprint size: 2" h x 1 3/4" w - 36/case, 23 lb

58220 19oz - Imprint size: 2 1/4" h x 2" w - 12/case, 8 lbs

	36	72	144	288	504	1008
16oz	8.85	5.65	5.45	5.25	5.05	4.85
19oz	9.15	5.90	5.70	5.50	5.30	5.10
Add. Colour	1.25	1.00	0.90	0.85	0.80	0.75
Setup Charge/Colour	\$40(G)		Repeat Setup/Colour \$20(G)			
4 Colour Process setup	\$200(G)		Halftone Setup \$50(G)			
2nd side (same)	\$0.60(C)		2nd side (different) \$0.70(C)			



10007 Nordic Rock - 10oz
17198 Nordic Cooler - 17oz

10007 10 oz - Imprint size: 1 1/2" h x 2" w - 36/case, 24 lbs
 17198 17oz - Imprint size: 2" h x 2" w - 12/case, 10 lbs

(6C)

	36	72	144	288	504	1008
10007 - 10.5oz	8.70	5.55	5.35	5.15	4.95	4.75
17198 - 15.5oz	8.95	5.75	5.55	5.35	5.15	4.95
Add. Colour	1.25	1.00	0.90	0.85	0.80	0.75
Setup Charge/Colour	\$40(G)		Repeat Setup/Colour \$20(G)			
4 Colour Process setup	\$200(G)		Halftone Setup \$50(G)			
2nd side (same)	\$0.60(C)		2nd side (different) \$0.70(C)			



10007 Nordic Rock
10.5oz



17198 Nordic Cooler
15.5oz

19374 Sterling DOF - 13oz
76497 Sterling Cooler - 16oz

19374 13oz - Imprint size: 2 1/2" h x 2" w - 36/case, 27 lbs
 76497 16oz - Imprint size: 3 1/4" h x 1 3/4" w - 36/case, 29 lbs

(6C)

	36	72	144	288	504	1008
19374 - 13oz	9.45	6.10	5.90	5.70	5.50	5.30
76497 - 16oz	9.55	6.20	6.00	5.80	5.60	5.40
Add. Colour	1.25	1.00	0.90	0.85	0.80	0.75
Setup Charge/Colour	\$40(G)		Repeat Setup/Colour \$20(G)			
4 Colour Process setup	\$200(G)		Halftone Setup \$50(G)			
2nd side (same)	\$0.60(C)		2nd side (different) \$0.70(C)			



19374 Sterling DOF
13oz



76497 Sterling Cooler
16oz

Executive Rock - 11oz

53224 11oz - Imprint size: 2" h x 2 3/4" w - 36/case, 23lbs
 53232 14oz - Imprint size: 2" h x 2 3/4" w - 36/case, 28lbs

(6C)

	36	72	144	288	504	1008
53224 - 11oz	8.70	5.55	5.35	5.15	4.95	4.75
53232 - 14oz	8.85	5.65	5.45	5.25	5.05	4.85



Executive Rock
11oz (53224)
14oz (53232)



Executive Highball
53205 - 13oz
53214 - 16oz

Executive Highball

53205 13oz - Imprint size: 3 1/4" h x 2 1/4" w - 36/case, 23 lbs
 53214 16oz - Imprint size: 3 3/4" h x 2 1/4" w - 36/case, 29 lbs

(6C)

	36	72	144	288	504	1008
53205 - 13oz	8.70	5.55	5.35	5.15	4.95	4.75
53214 - 16oz	8.85	5.65	5.45	5.25	5.05	4.85
Add. Colour	1.25	1.00	0.90	0.85	0.80	0.75
Setup Charge/Colour	\$40(G)		Repeat Setup/Colour \$20(G)			
4 Colour Process setup	\$200(G)		Halftone Setup \$50(G)			
2nd side (same)	\$0.60(C)		2nd side (different) \$0.70(C)			





Hugo
P5987 - 13.25oz

Hugo

P5987 13.25oz - Imprint size: 1 1/4"h x 1 1/4"w - 12/case, 7lbs

(6C)

	36	72	144	288	504	1008
P5987 - 13.25oz	8.35	5.25	5.10	4.95	4.80	4.65
Add. Colour	1.25	1.00	0.90	0.85	0.80	0.75
Setup Charge/Colour	\$40(G)			Repeat Setup/Colour \$20(G)		
4 Colour Process setup	\$200(G)			Halftone Setup \$50(G)		
2nd side (same)	\$0.60(C)			2nd side (different) \$0.70(C)		



Eminence
J2634 - 11oz
J3377 - 17oz

Eminence

J2634 11oz - Imprint size: 1 1/4"h x 1 1/4"w - 12/case, 5 lbs

(6C)

J3377 17oz - Imprint size: 1 3/4"h x 1 3/4"w - 12/case, 6 lbs

	36	72	144	288	504	1008
J2634 - 11oz	7.90	4.95	4.80	4.65	4.50	4.35
J3377 - 17oz	8.45	5.35	5.20	5.05	4.90	4.75
Add. Colour	1.25	1.00	0.90	0.85	0.80	0.75
Setup Charge/Colour	\$40(G)			Repeat Setup/Colour \$20(G)		
4 Colour Process setup	\$200(G)			Halftone Setup \$50(G)		
2nd side (same)	\$0.60(C)			2nd side (different) \$0.70(C)		



Stemless Wine
D2015 - 5oz
C8832 - 9oz
C8303 - 15oz
N2673 - 17oz
C8304 - 21oz

Stemless Wine Glass

D2015 5.5oz - Imprint size: 1 1/4"h x 1 1/4"w - 24/case, 6 lbs

C8832 9oz - Imprint size: 1 1/4"h x 1 1/4"w - 12/case, 5 lbs

C8303 15oz - Imprint size: 1 1/2"h x 1 1/2"w - 12/case, 6 lbs

N2672 17oz - Imprint size: 1 3/4"h x 1 3/4"w - 12/case, 6 lbs

C8304 21oz - Imprint size: 2"h x 2"w - 12/case, 7 lbs

(6C)

	36	48	72	144	288	504	1008
5.5oz	X	6.35	5.35	5.15	5.00	4.85	4.70
9oz	8.45	X	5.40	5.20	5.05	4.90	4.75
15oz	8.75	X	5.60	5.45	5.30	5.15	5.00
17oz	8.85	X	5.65	5.50	5.35	5.20	5.05
21oz	8.95	X	5.75	5.60	5.45	5.30	5.15
Add Colour	1.25	1.15	1.00	0.90	0.85	0.80	0.75
Setup Charge/Colour	\$40(G)			Repeat Setup/Colour \$20(G)			
4 Colour Process setup	\$200(G)			Halftone Setup \$50(G)			
2nd side (same)	\$0.60(C)			2nd side (different) \$0.70(C)			



Concerto
J6247 - 11.5oz
J5661 - 19oz

Concerto

J6247 11.5oz - Imprint size: 1 1/4"h x 1 1/4"w - 12/case, 4 lbs

J5661 19oz - Imprint size: 2"h x 2"w - 12/case, 6 lbs

(6C)

	36	72	144	288	504	1008
J6247 - 11.5oz	8.55	5.45	5.30	5.15	5.00	4.85
J5661 - 19oz	8.95	5.75	5.60	5.45	5.30	5.15
Add. Colour	1.25	1.00	0.90	0.85	0.80	0.75
Setup Charge/Colour	\$40(G)			Repeat Setup/Colour \$20(G)		
4 Colour Process setup	\$200(G)			Halftone Setup \$50(G)		
2nd side (same)	\$0.60(C)			2nd side (different) \$0.70(C)		





Martini Glass
09232 - 7.5oz
79320 - 10oz

Martini Glass

09232 7.5oz - Imprint size: 1 1/4" h x 1 1/4" w - 12/case, 6 lbs
 79320 10oz - Imprint size: 1 1/2" h x 1 1/2" w - 12/case, 8 lbs

(6C)

	36	72	144	288	504	1008
7.5oz	14.45	9.85	9.65	9.45	9.25	9.05
10oz	14.85	10.15	9.95	9.75	9.55	9.35
Add. Colour	1.25	1.00	0.90	0.85	0.80	0.75
Setup Charge/Colour	\$40(G)		Repeat Setup/Colour \$20(G)			
4 Colour Process setup	\$200(G)		Halftone Setup \$50(G)			
2nd side (same)	\$0.60(C)		2nd side (different) \$0.70(C)			



G1352 Cabernet
16oz

G1352 - Cabernet - 16oz

Imprint size: 1 1/2" h x 1 3/4" w - 12/case, 6 lbs

(6C)

	36	72	144	288	504	1008
1 Colour	12.20	8.15	7.95	7.75	7.55	7.35
Add. Colour	1.25	1.00	0.90	0.85	0.80	0.75
Setup Charge/Colour	\$40(G)		Repeat Setup/Colour \$20(G)			
4 Colour Process setup	\$200(G)		Halftone Setup \$50(G)			
2nd side (same)	\$0.60(C)		2nd side (different) \$0.70(C)			



37260 Wine Taster
7oz

37260 - Wine Taster - 7oz

Imprint size: 1 1/2" h x 1 1/2" w - 24/case, 8 lbs

(6C)

	48	72	144	288	504	1008
1 colour	7.70	6.70	6.50	6.30	6.10	5.90
Add. Colour	1.15	1.00	0.90	0.85	0.80	0.75
Setup Charge/Colour	\$40(G)		Repeat Setup/Colour \$20(G)			
4 Colour Process setup	\$200(G)		Halftone Setup \$50(G)			
2nd side (same)	\$0.60(C)		2nd side (different) \$0.70(C)			



42258 Ice Wine
4oz

42258 - Ice Wine - 4oz

Imprint size: 1 1/4" h x 1 1/2" w - 24/case, 6 lbs

(6C)

	48	72	144	288	504	1008
1 colour	8.75	7.75	7.55	7.35	7.15	6.95
Add. Colour	1.15	1.00	0.90	0.85	0.80	0.75
Setup Charge/Colour	\$40(G)		Repeat Setup/Colour \$20(G)			
4 Colour Process setup	\$200(G)		Halftone Setup \$50(G)			
2nd side (same)	\$0.60(C)		2nd side (different) \$0.70(C)			





09192 Nuance Flute
6oz

09192 - Nuance Flute - 6oz

Imprint size: 2" h x 1 1/2" w - 12/case, 5 lbs

(6C)

	36	72	144	288	504	1008
1 colour	9.80	6.35	6.15	5.95	5.75	5.55
Add. Colour	1.25	1.00	0.90	0.85	0.80	0.75
Setup Charge/Colour	\$40(G)		Repeat Setup/Colour \$20(G)			
4 Colour Process setup	\$200(G)		Halftone Setup \$50(G)			
2nd side (same)	\$0.60(C)		2nd side (different) \$0.70(C)			



Nuance Wine
43874 - 8.5oz
09190 - 10.5oz

Nuance Wine

43874 8.5oz Imprint size: 1 1/4" h x 1 1/4" w - 12/case, 5 lbs
09190 10.5oz Imprint size: 1 1/2" h x 1 1/2" w - 12/case, 6 lbs

(6C)

	36	72	144	288	504	1008
43874 - 8.5oz	9.80	6.35	6.15	5.95	5.75	5.55
09190 - 10.5oz	10.00	6.50	6.30	6.10	5.90	5.70
Add. Colour	1.25	1.00	0.90	0.85	0.80	0.75
Setup Charge/Colour	\$40(G)		Repeat Setup/Colour \$20(G)			
4 Colour Process setup	\$200(G)		Halftone Setup \$50(G)			
2nd side (same)	\$0.60(C)		2nd side (different) \$0.70(C)			



J8207 Belgium Craft
17oz

J8207 Belgium Craft - 17oz

Imprint size: 2 1/4" h x 2 1/4" w - 24/case, 14 lbs

(6C)

	48	72	144	288	504	1008
1 Colour	7.80	6.75	6.55	6.35	6.15	5.95
Add. Colour	1.15	1.00	0.90	0.85	0.80	0.75
Setup Charge/Colour	\$40(G)		Repeat Setup/Colour \$20(G)			
4 Colour Process setup	\$200(G)		Halftone Setup \$50(G)			
2nd side (same)	\$0.60(C)		2nd side (different) \$0.70(C)			



Cerveoise
H0713 - 16.5oz

H0713 - Cerveoise - 16.5oz

Imprint size: 2 1/4" h x 2 1/4" w - 24/case, 15 lbs

(6C)

	48	72	144	288	504	1008
1 Colour	9.45	8.40	8.20	8.00	7.80	7.60
Add. Colour	1.15	1.00	0.90	0.85	0.80	0.75
Setup Charge/Colour	\$40(G)		Repeat Setup/Colour \$20(G)			
4 Colour Process setup	\$200(G)		Halftone Setup \$50(G)			
2nd side (same)	\$0.60(C)		2nd side (different) \$0.70(C)			





71079 Brandy
12oz

71079 - Brandy - 12oz (6C)

Imprint size: 1 1/2" h x 2" w - 24/case, 12 lbs

	48	72	144	288	504	1008
1 Colour	9.15	8.15	7.95	7.75	7.55	7.35
Add. Colour	1.15	1.00	0.90	0.85	0.80	0.75
Setup Charge/Colour	\$40(G)		Repeat Setup/Colour \$20(G)			
4 Colour Process setup	\$200(G)		Half-tone Setup \$50(G)			
2nd side (same)	\$0.60(C)		2nd side (different) \$0.70(C)			



FK209 Kenzie Whiskey Taster
5.75oz

FK209 - Kenzie Whiskey Taster - 5.75oz (6C)

Imprint size: 1 1/4" h x 1 1/4" w - 36/case, 12 lbs

	36	72	144	288	504	1008
1 Colour	7.40	4.55	4.40	4.25	4.10	3.95
Add. Colour	1.25	1.00	0.90	0.85	0.80	0.75
Setup Charge/Colour	\$40(G)		Repeat Setup/Colour \$20(G)			
4 Colour Process setup	\$200(G)		Half-tone Setup \$50(G)			
2nd side (same)	\$0.60(C)		2nd side (different) \$0.70(C)			



53337 Handy Mug
10oz

53337 - Handy Mug - 10oz (6C)

Imprint size: 2" h x 2 1/2" w - 12/case, 8 lbs

	36	72	144	288	504	1008
1 Colour	9.65	6.25	6.05	5.85	5.65	5.45
Add. Colour	1.25	1.00	0.90	0.85	0.80	0.75
Setup Charge/Colour	\$40(G)		Repeat Setup/Colour \$20(G)			
4 Colour Process setup	\$200(G)		Half-tone Setup \$50(G)			
2nd side (same)	\$0.60(C)		2nd side (different) \$0.70(C)			



22097 Nordic Mug
13oz

22097 - Nordic Mug - 13oz (6C)

Imprint size: 2 1/4" h x 2 1/2" w - 24/case, 29 lbs

	48	72	144	288	504	1008
1 Colour	8.40	7.35	7.15	6.95	6.75	6.55
Add. Colour	1.15	1.00	0.90	0.85	0.80	0.75
Setup Charge/Colour	\$40(G)		Repeat Setup/Colour \$20(G)			
4 Colour Process setup	\$200(G)		Half-tone Setup \$50(G)			
2nd side (same)	\$0.60(C)		2nd side (different) \$0.70(C)			



262 Glass Coffee Cup
12oz

262 - Glass Coffee Cup - 12oz

Imprint size: 2" h x 2 1/4" w - 36/case, 32 lbs

(6C)

	36	72	144	288	504	1008
1 Colour	9.30	6.00	5.85	5.70	5.55	5.40
Add. Colour	1.25	1.00	0.90	0.85	0.80	0.75
Setup Charge/Colour	\$40(G)		Repeat Setup/Colour \$20(G)			
4 Colour Process setup	\$200(G)		Halftone Setup \$50(G)			
2nd side (same)	\$0.60(C)		2nd side (different) \$0.70(C)			



L6194 Cambridge
14oz

L6194 - Cambridge - 14oz

Imprint size: 1 3/4" h x 2 1/4" w - 24/case, 25 lbs

(6C)

	48	72	144	288	504	1008
1 Colour	8.45	7.45	7.25	7.05	6.85	6.65
Add. Colour	1.15	1.00	0.90	0.85	0.80	0.75
Setup Charge/Colour	\$40(G)		Repeat Setup/Colour \$20(G)			
4 Colour Process setup	\$200(G)		Halftone Setup \$50(G)			
2nd side (same)	\$0.50(C)		2nd side (different) \$0.60(C)			



Haworth
61076 - 19.25oz

Haworth

61076 19.25oz 2 1/2" h x 2 3/4" w - 24/case, 32 lbs

(6C)

	48	72	144	288	504	1008
61076 - 19.25oz	9.35	8.35	8.15	7.95	7.75	7.55
Add. Colour	1.15	1.00	0.90	0.85	0.80	0.75
Setup Charge/Colour	\$40(G)		Repeat Setup/Colour \$20(G)			
4 Colour Process setup	\$200(G)		Halftone Setup \$50(G)			
2nd side (same)	\$0.60(C)		2nd side (different) \$0.70(C)			



H7319 - Bolero
16oz

H7319 - Bolero - 16oz

Imprint size: 2 1/2" h x 3" w - 12/case, 17 lbs

(6C)

	36	72	144	288	504	1008
1 Colour	13.45	9.15	8.95	8.75	8.55	8.35
Add. Colour	1.25	1.00	0.90	0.85	0.80	0.75
Setup Charge/Colour	\$40(G)		Repeat Setup/Colour \$20(G)			
4 Colour Process setup	\$200(G)		Halftone Setup \$50(G)			
2nd side (same)	\$0.60(C)		2nd side (different) \$0.70(C)			





53403 Footed Mug
10oz

53403 - Footed Mug - 10oz (6C)

Imprint size: 2 1/4"h x 2 1/2"w - 24/case, 21 lbs

	48	72	144	288	504	1008
1 Colour	8.45	7.45	7.25	7.05	6.85	6.65
Add. Colour	1.15	1.00	0.90	0.85	0.80	0.75
Setup Charge/Colour	\$40(G)		Repeat Setup/Colour \$20(G)			
4 Colour Process setup	\$200(G)		Halftone Setup \$50(G)			
2nd side (same)	\$0.60(C)		2nd side (different) \$0.70(C)			



97084 Drinking Jar
16oz

97084 - Drinking Jar- 16oz (6C)

Imprint size: 2 1/2"h x 2 1/4"w - 12/case, 12lbs

	36	72	144	288	504	1008
1 colour	12.00	8.00	7.80	7.60	7.40	7.20
Add. Colour	1.25	1.00	0.90	0.85	0.80	0.75
Setup Charge/Colour	\$40(G)		Repeat Setup/Colour \$20(G)			
4 Colour Process setup	\$200(G)		Halftone Setup \$50(G)			
2nd side (same)	\$0.60(C)		2nd side (different) \$0.70(C)			



H8982 Dome Lid
36/case 16lbs



64844 Candy Jar
16oz

64844 - Candy Jar with Dome Lid - 16oz (6C)

Imprint size: 2"h x 2 3/4"w - 12/case, 7 lbs

	36	72	144	288	504	1008
1 colour	12.80	8.60	8.40	8.20	8.00	7.80
Add. Colour	1.25	1.00	0.90	0.85	0.80	0.75
Setup Charge/Colour	\$40(G)		Repeat Setup/Colour \$20(G)			
4 Colour Process setup	\$200(G)		Halftone Setup \$50(G)			
2nd side (same)	\$0.60(C)		2nd side (different) \$0.70(C)			



1L Beer Boot Glass

Beer Boot Glass - 1L (4C)

Imprint size: 2 1/2"h x 2 1/2"w - 24/case, 48 lbs

	36	72	144	288
1 colour	21.35	15.00	14.50	14.00
Add. Colour	1.25	1.00	0.90	0.85
Setup Charge/Colour	\$40(G)		Repeat Setup/Colour \$20(G)	
4 Colour Process setup	\$200(G)		Halftone Setup \$50(G)	
2nd side (same)	\$0.60(C)		2nd side (different) \$0.70(C)	

About Our Company

We specialize in printing on all chinaware and glassware. With over 30 years of ceramic printing experience, Dar-Mar can offer one color to multi-color and 4 color process printing for chinaware and glassware. All our ceramic products are baked at 1350 F, and glassware at 1150 F, making the imprint 100% dishwasher safe. All production is completed in house, which allows for quick turnaround times, and efficient service.

Check out our website to see what items we regularly have available. If you are interested in an item that is not in our catalogue or website, let us know and we may be able to source it for you.

Are you tired of using other printers where you had problems where the imprint fades or washes off in the dishwasher, broken promises, rush order delays or missed deadlines? When working with us, that won't be an issue. If we accept your order (Rush orders included), we guarantee to meet your deadlines with amazing quality, friendly service, and great prices.

Contact us now for a quote, or any questions/ inquiries, and we would be happy to be of service. We want to earn your business, and prove that we are your most reliable ceramic and glass promotional drinkware supplier.

100% Dishwasher Safe

Don't throw your money away with printing that washes off.
Our printing is 100% permanent and will never fade, wash or scratch off.

Multi-Colour & 4 Colour Process

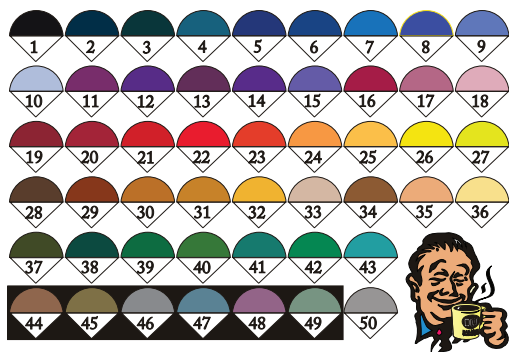
We are capable of printing an unlimited amount of colours with precise registration and halftones.

White Backing

No Extra Charge for White Backing Behind Logo when Printing on Coloured mugs
(When Needed) - We only charge for colours you can actually see.

Reliable

If we accept your order, you can rest assured that your order will be delivered on time.



Colour Chart Available
upon request

Vectorize

Your Spot Color Artwork

- Scanned Images
- Low Resolution .jpeg Artwork

\$50 (c) - 1 colour
\$10(c) for every additional color

(Does not apply to 4 color process or halftones)